

MAY 2024 CATALOGUE

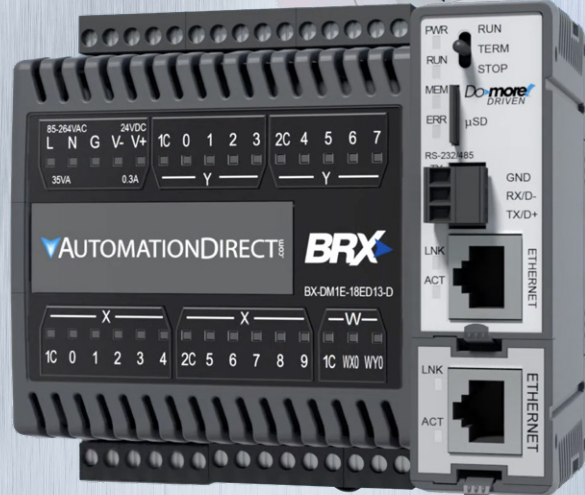
From simple to advanced control, we supply products to suit your project...and your budget!

PLCs	2
HMIs	4
COMMUNICATIONS	6
KEPWARE	9
SENSORS-PROCESS	10
SENSORS- PROXIMITY	12
NEW! POWER SUPPLIES	13
WEG SWITCHGEAR	14
VF DRIVES	16
SAFETY PRODUCTS	17
WIRING SOLUTIONS	18
NEW! HANDTOOLS	19
SYSTEM INTEGRATORS	20

\$209
C0-00DD1-D



NEW!
\$605
P2-622



\$912
BX-DM1E-18ED13-D

- Quality Customer Care
- Free Phone Technical Support
- Fast Despatch
- Easy Ordering

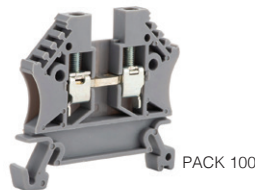
www.directautomation.com.au



\$444

P1-540

PRODUCTIVITY 1000 CPU WITH UP TO 50MB USER MEMORY
P2



\$150

DN-T12-A

SINGLE, DOUBLE OR 3-LEVEL TERMINAL BLOCKS = LOW-COST SENSOR WIRING
P18

NEW!

\$90



TW-SD-SET-1

WERA HAND TOOLS FOR INDUSTRIAL AND COMMERCIAL APPLICATIONS
P19

kepware®
SOFTWARE



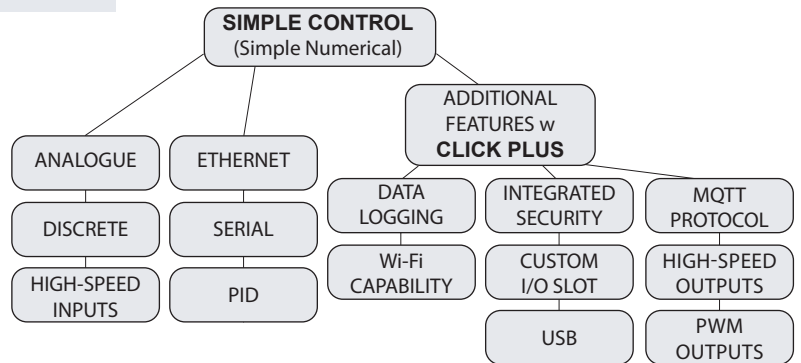
CONNECT, ACCESS AND CONTROL YOUR INDUSTRIAL DATA WITH KEPWARE.
P9

PLCs

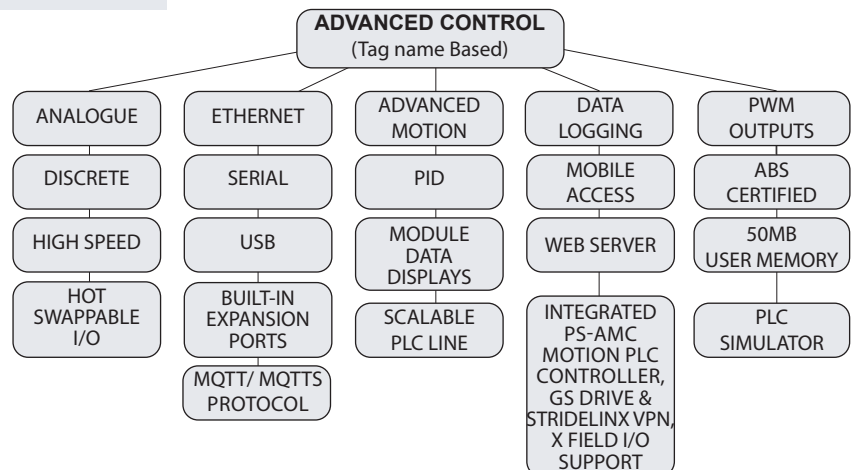
AFFORDABLE CONTROLLER FAMILIES

Regardless of your project or system needs, we have a PLC to match your specs and your budget. So whether you're building a simple process or a complex machine, affordable PLCs are just a click away, and backed with support you can rely on.

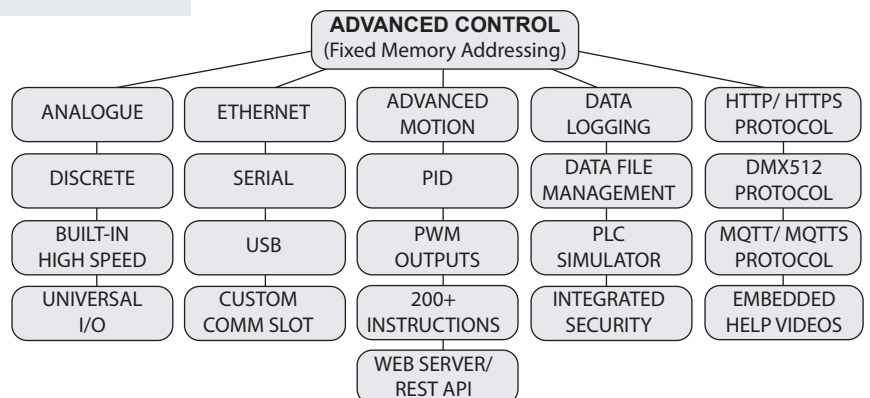
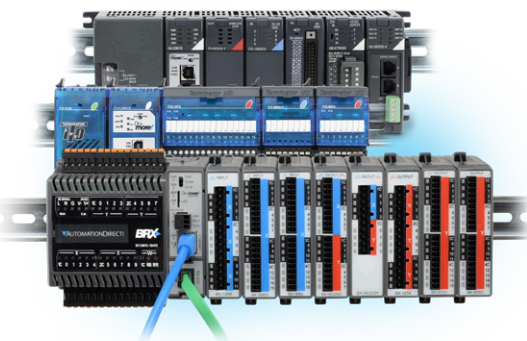
THE BEGINNER'S BEST FRIEND



ADVANCED ALL-PURPOSE CONTROL



PROGRAMMING POWERHOUSE



PLCs

FROM SIMPLE TO ADVANCED CONTROL

The CLICK PLC family features a compact size and easy programming, ideal for small applications and beginner projects. The CLICK PLUS series adds features such as Wi-Fi capability, motion control, data logging, and more.

CPU Models starting at...



\$203

(C2-01CPU)



CLICK PLUS

1x Option Slot, Ethernet, serial and microB-USB ports

\$283

(C2-01CPU-2)



CLICK PLUS

2x Option Slot, Ethernet, serial and microB-USB ports

\$209

(C0-00DD2-D)



CLICK BASIC

Basic CPU Module

\$514

(C0-12DD2E-D)



CLICK ETHERNET

Ethernet Analog CPU Module

The Productivity PLC family offers the utmost versatility in both hardware and software. With tag name programming, easy device integration that includes PS-AMC motion controllers, GS drives, and other WOW factors such as analog module data displays, Productivity PLCs are a perfect fit for almost any application.

CPU Models starting at...



\$444

(P1-540)



P1000

50MB User Memory
4 built-in comms

\$655

(P2-550)



P2000

50MB Memory
5 built-in comms

\$1076

(P3-550E)



P3000

50MB Memory
6 built-in comms

\$177

(P1AM-100)



OPEN SOURCE

Arduino-compatible CPU

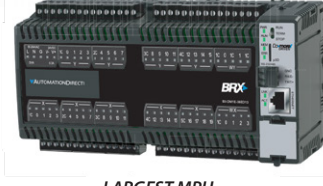
The Do-more/BRX PLC family has one of the most advanced instruction sets in the market and many other features, including REST API functionality, that allow it to stand strong against any challenge. With IIoT Integration, data logging, motion control, high-speed I/O, abundant processing power, and customizable communications, BRX PLCs can easily satisfy the changing demands of industrial automation projects.

Ethernet Models starting at...



\$1114

(BX-DM1E-36ER3-D)



LARGEST MPU
36 BUILT-IN I/O

14 configurations from which to choose

\$898

(BX-DM1E-18ER3-D)



MID-RANGE MPU
18 BUILT-IN I/O

2 configurations from which to choose

\$801

(BX-DM1E-10ER3-D)



SMALL MPU
10 BUILT-IN I/O

2 configurations from which to choose

\$715

(BX-DM1E-M-D)



SMALLEST MPU
NO BUILT-IN I/O

2 configurations from which to choose

HMI's

C-MORE CM5 SERIES HMI's

NEW! C-MORE CM5 SERIES HMI

The C-more CM5 series provides many hardware options with a variety of screen sizes and communication capabilities. All CM5 panels have serial and Ethernet ports that support many of the most popular industry protocols, including EtherNet/IP and Modbus. The included USB ports provide in-an-instant connections for programming and peripherals.



CM5-T4W \$599

C-more CM5 series touch screen HMI, 4.3in colour TFT LCD, analog resistive, widescreen, 480 x 272 pixel, WQVGA, LED backlight, (1) Ethernet, (2) serial and (2) USB ports and (1) memory card slot.



CM5-T12W \$2089

C-more CM5 series touch screen HMI, 12.1in colour TFT LCD, analog resistive, widescreen, 1280 x 800 pixel, WXGA, LED backlight, (2) Ethernet, (3) serial and (4) USB ports and (1) memory card slot.



CM5-T7W \$899

C-more CM5 series touch screen HMI, 7in colour TFT LCD, analog resistive, widescreen, 800 x 480 pixel, WVGA, LED backlight, (1) Ethernet, (2) serial and (2) USB ports and (1) memory card slot.



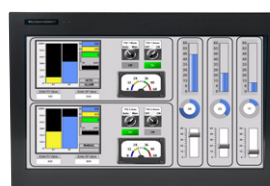
CM5-T15W \$2899

C-more CM5 series touch screen HMI, 15.6in colour TFT LCD, analog resistive, widescreen, 1366 x 768 pixel, HD, LED backlight, (2) Ethernet, (3) serial and (4) USB ports and (1) memory card slot.



CM5-T10W \$1539

C-more CM5 series touch screen HMI, 10.1in colour TFT LCD, analog resistive, widescreen, 1024 x 600 pixel, WSVGA, LED backlight, (2) Ethernet, (3) serial and (4) USB ports and (1) memory card slot.



CM5-T22W \$4620

C-more CM5 series touch screen HMI, 21.5in colour TFT LCD, analog resistive, widescreen, 1920 x 1080 pixel, FHD, LED backlight, (2) Ethernet, (3) serial and (4) USB ports and (1) memory card slot.

FREE C-MORE CM5 SOFTWARE

CM5-PGMSW C-more Programming Software can be downloaded at no charge. The software requires a USB port or Ethernet connection* on your PC to connect to the C-more panel. Software Help Files are included in the download. This software programs all the C-more panels.

CM5 COMPATIBILITY

C-more HMI's can support many brands of PLCs and in particular include many protocols for the Allen-Bradley PLC brand. C-more's A-B Ethernet drivers allow the simple connectivity of multiple panels and/or multiple Allen-Bradley PLCs.

Supported Drivers

* Please refer to the technical specifications for further details.

AutomationDirect:

- Do-more, Productivity, CLICK, DirectLOGIC, Think & Do PLCs
- GS Drives
- SOLO Temperature Controllers
- K-Sequence
- DirectNET
- ECOM Ethernet

Modbus RTU

Modbus TCP/IP

Allen-Bradley:

- A-B DF1
 - A-B EtherNet/IP Client
 - A-B EtherNet/IP Server
 - Generic IO Messaging
- GE:**
- 90/30, 90/70, Micro 90, VersaMax Micro (SNPX)
 - 90/30, Rx3i (SRTP Ethernet)

Omron:

- Omron Host Link Adapter
- Omron FINS (Serial and Ethernet)

Mitsubishi:

- FX Series CPU
- FX-1N(C), 2N(C), 3U(C) CPU
- Q Series (Q02, Q02H, Q06H, Q12H, Q25H CPU)
- Q/QnA (Serial & Ethernet)

Siemens:

- S7-200 (Serial: PPI)
- S7-200 (Ethernet: ISO over TCP/IP)
- S7-300 (Ethernet: ISO over TCP/IP)
- S7-400 (Ethernet: ISO over TCP/IP)
- S7-1200 (Ethernet: ISO over TCP/IP)

HMI's

C-MORE EA9 AND EA3 SERIES HMI's

C-MORE EA9 SERIES HMI



EA9-T7CL-R \$1425
Touch screen HMI, 7in colour TFT LCD, widescreen, 800 x 480, WVGA, supports (1) serial, (1) Ethernet and (2) USB ports and (1) memory card slot.

EA9-RHMI \$1054
Headless HMI, supports (2) serial, (1) Ethernet, (2) USB ports and (1) HDMI audio/video out and (1) memory card slot.

EA9-PGMSW FREE
C-more Windows programming software. Free download. Requires USB or Ethernet connection to touch panel



C-MORE EA3 SERIES HMI

EA3-S3ML-RN \$302
Non-touch 3in monochrome STN LCD, 128 x 64 pixel, LED backlight, supports (1) serial port.

EA3-S3ML-R \$426
Touch screen HMI, 3in monochrome STN LCD, 128 x 64 pixel, LED backlight, supports (1) serial port

EA-MG-PGMSW FREE
C-more Micro Windows programming software, USB or free download Requires USB port connection from PC to C-more Micro panel



LED MESSAGE DISPLAYS

VIEWMARQ

VIEWMARQ LED DISPLAYS



MD4-0112T-1	\$1286	1 line x 12 characters. 50mm max character size. Approx viewing distance 100ft.
MD4-0124T-1	\$1928	1 line x 24 characters. 50mm max character size. Approx viewing distance 100ft.
MD4-0212T-1	\$2271	2 line x 12 characters. 120mm max character size. Approx viewing distance 200ft.
MD4-0224T	\$2057	2 line x 24 characters. 120mm max character size. Approx viewing distance 200ft.
MD4-0412T-1	\$2682	4 line x 12 characters. 241mm max character size. Approx viewing distance 400ft.
MD4-0424T-1	\$4573	4 line x 24 characters. 241mm max character size. Approx viewing distance 400ft.

The ViewMarq message displays utilize both serial and Ethernet communications and can be connected to a PLC or PC or any device capable of serial ASCII master, Modbus RTU, or Modbus TCP communications. Messages can be controlled by any of the following methods:

- ASCII Input Strings through the RS232 or RS485 port
- Modbus RTU Messages through the RS232 or RS485 port
- Modbus TCP Messages through the Ethernet port.

Other features include; store and trigger up to 200 messages, scrolling messages, blinking text and messages, display embedded PLC string and numeric variables, tri-colour LED (Red, Green, Amber), built-in Ethernet port; RS-232, and RS-485 serial ports, free, easy-to-use configuration software package

COMMUNICATIONS

WIFI & REMOTE ACCESS

Industrial-grade communication products can withstand harsh environments and provide reliable data exchange between control devices that use various transmission media and protocols.

3ONEDATA MANAGED AND UNMANAGED INDUSTRIAL SWITCHES



IES2105-5T-P48

\$95

3ONEDATA UNMANAGED SWITCHES -40 TO 75 DEG C, 5 ports 10/100Base-T(X), DC12-48VDC, DINRail, plug and play, single power supply.

IES2105-3T2F-P48

\$369

3ONEDATA UNMANAGED SWITCHES -40 TO 75 DEG C, 3 ports 10/100Base-T(X) +2 Fibre ports 100Base-FX, Single-mode, SC connectors, DC12-48V.



IES618

\$518

3ONEDATA MANAGED SWITCHES -40 TO 75 DEG C, Web managed, 8 ports 10/100Base-T(X), DC12-36V.

IES618-2F-M-SC

\$715

3ONEDATA MANAGED SWITCHES -40 TO 75 DEG C, Web managed, 6 ports 10/100Base-T(X)+2 ports 100Base-FX Multi-mode SC/ST, DC12-36V



IES205G

\$330

INDUSTRIAL GIGABIT ETHERNET SWITCHES, UNMANAGED, 5 ports full Gigabit Industrial Ethernet Switch, 10/100/1000Base-T(X), DC12-48V.

SERIAL CONVERTERS



FA-ISOCAN

\$299

AutomationDirect serial converter, RS-232 (RJ12) to RS-422/485 (5-pin terminal), isolation protection, 5 VDC from PLC or 24 VDC external nominal input, encapsulated, DIN rail or panel mount.

MB-GATEWAY

\$528

AutomationDirect Modbus gateway, Ethernet to serial, (1) Ethernet 10/100Base-T (RJ45) and (1) RS-422/485 (6-pin terminal) port(s), (12) simultaneous Ethernet connections, (128) serial device(s), 12-24 VDC required.

UBIQUITI NANOSTATION



NS-5AC

\$227

5GHz NanoStation, AP or Client, High security AIRMAX Wi-Fi, POE power supply included.

NSM2

\$286

2.4GHz Nanostation, 2x2 MIMO, AP or Client, Standard Wi-Fi or AIRMAX Wi-Fi. 11dBi gain at 2.4GHz, Outdoor design, Dual Ethernet ports, PoE power supply included.

COMMUNICATIONS

NETWORK HARDWARE

Wiesemann & Theis GmbH (W&T) in Germany is a trusted manufacturer of microcomputers with over 40 years experience linking industry, office and IT with reliable network and sensor technology as well as interface converters. As a basic measure for many IT security concepts the W&T micro-firewalls isolate critical systems (older devices, IoT systems, etc.) on a secure island in your network. The Microwall Bridge provides security when needed, quickly and simply, while the Microwall VPN and IO provide additional protection.

WIESEMANN & THEIS NETWORK HARDWARE



55411

\$855

The **Microwall Bridge (firewall)** segments sensitive network areas without changing the IP configuration of the components which have been isolated. The preferred area of application is therefore the easiest possible, add-on security expansion of existing infrastructures.

- 2x Ethernet 100/1000BaseT, Gigabit Ethernet, Screw terminals, 24V-48V DC POE.



55211

\$925

The **Microwall VPN** with integrated WireGuard VPN server is a firewall that uses appropriate rules to protect your critical machines or systems from undesired or harmful access. Communication from and to the island is restricted to what is essential for operation, thereby significantly reducing the potential attack area.

- 2x Ethernet 100/1000BaseT, Gigabit Ethernet, Screw terminals, 24V-48V DC POE.



55212

\$1095

The **Microwall IO** with innovative I/O control for VPN access includes all the functions of the Microwall VPN. Use the digital in- and outputs to switch remote maintenance and firewall-specific actions in automation and process environments. Using a PLC output, a simple button or switch etc. VPN access, certain firewall rules or the status of the network interfaces can be controlled.

- 2x Ethernet 100/1000BaseT, 2 switching inputs + 2 switching outputs, digital inputs + 2 digital 24V outputs, Screw terminals, 24V-48V DC POE.

ETHERNET PATCH CABLES

ETHERNET PATCH CABLE, CAT5E

AutomationDirect Cat5e Ethernet straight-through patch cable, STP (overall foil shield), RJ45 male to RJ45 male. For use with 10/100/1000 Mbps networks. These straight-through cables with RJ45 connectors exceed Cat5e cable specs and will create solid, reliable Ethernet networks for any application. Available in various colours and lengths.

C5E-STPBL-S3	\$14	3ft	Blue
C5E-STPBL-S7	\$25	7ft	Blue
C5E-STPBL-S10	\$26	10ft	Blue
C5E-STPBL-S14	\$32	14ft	Blue
C5E-STPBL-S25	\$46	25ft	Blue
C5E-STPBL-S50	\$80	50ft	Blue



C5E-STPGY-S3	\$14	3ft	Grey
C5E-STPGN-S7	\$21	7ft	Green
C5E-STPBK-S10	\$26	10ft	Black
C5E-STPYL-S14	\$31	14ft	Yellow
C5E-STPRD-S25	\$44	25ft	Red
C5E-STPPL-S50	\$72	50ft	Purple

COMMUNICATIONS

REMOTE ACCESS AND SECURE VPN

The StrideLinx remote access solution provides affordable, secure access to remote machines or systems using a low-cost VPN router and FREE cloud service. Beyond free remote access, the StrideLinx platform can be upgraded with easy add-on subscriptions to enhance its capabilities including cloud data logging/reporting and cloud notify/alarms.

STRIDE AND STRIDELINX INDUSTRIAL IOT SOLUTIONS



\$21
SE-ANT210

STRIDE whip/straight 2.4 GHz WiFi antenna, IP65, connector mount. For use with SE-SL3011-WF VPN router and CLICK PLUS PLCs.



\$77
SE-ANT250

STRIDE dome 2.4 GHz WiFi antenna, IP67, panel mount, 9.8ft/3m cable length. For use with SE-SL3011-WF VPN router and CLICK PLUS PLCs.



\$88
SE-ANT150

STRIDE dome LTE antenna, IP67, panel mount, 9.8ft/3m cable length. For use with SE-SL3011-4G and SE-SL3011-4GG VPN routers.



\$27
SE-ANT110

STRIDE whip/tilt LTE antenna, connector mount. For use with SE-SL3011-4G and SE-SL3011-4GG VPN routers.



\$69
SE-ANT130

STRIDE whip/straight LTE antenna, magnetic base mount, 9.8ft/3m cable length. For use with SE-SL3011-4G and SE-SL3011-4GG VPN routers.



SE-SL3011 **\$997**

StrideLinx Pro industrial VPN router, wired Internet connectivity, (5) Ethernet Gigabit (RJ45) port(s), Android/iOS with mobile VPN, 12-24 VDC required.



SE-SL3011-WF **\$1251**

StrideLinx Pro industrial VPN router, wired + 802.11 b/g/n WiFi Internet connectivity, WiFi LAN and (5) Ethernet Gigabit (RJ45) port(s), Android/iOS with mobile VPN, 12-24 VDC required.



SE-SL3011-4GG **\$1464**

StrideLinx Pro industrial VPN router, wired + 4G Global LTE and US LTE Verizon Internet connectivity, (5) Ethernet Gigabit (RJ45) port(s), Android/iOS with mobile VPN, 12-24 VDC required.

NOTE: SIM card and data plan will need to be purchased.



Program, monitor and troubleshoot most major brands through a secure VPN:

- AutomationDirect
- Allen-Bradley
- Siemens
- Omron
- Schneider Electric
- Many More!



SE-SW5U-ST-WT **\$672**

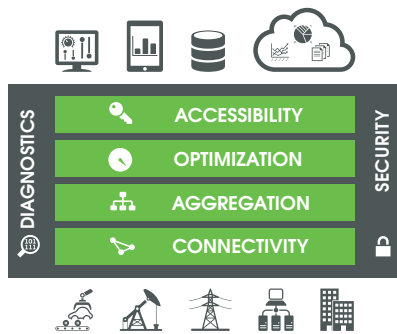
STRIDE industrial unmanaged Ethernet switch, 5 ports, (4) Ethernet 10/100Base-T (RJ45) and (1) multi-mode ST 100FX fiber port(s), -40 to +85 deg C, metal housing, IP40, 35mm DIN rail mount.



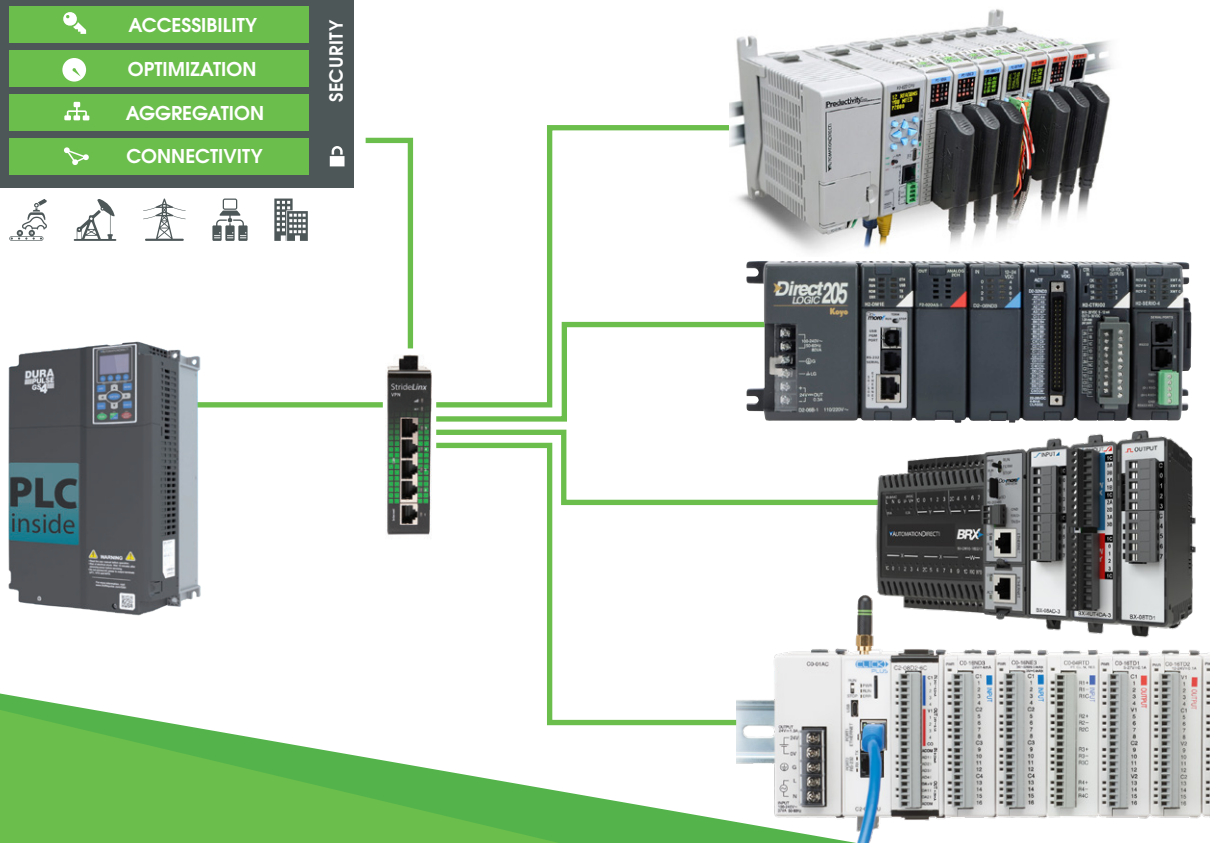
SGW-MQ1611 **\$556**

STRIDE industrial MQTT gateway, (1) Ethernet 10/100Base-T (RJ45) and (1) RS-485 (2-pin terminal) port(s), wired Internet connectivity, 10-30 VDC required.

Connect, access, and control your industrial data.



Need to get all your devices and systems talking?
Then you need Kepware



Access the right data at the right time with factory-wide connectivity. Enable disparate industrial equipment and systems to speak the same language to provide real-time data to enterprise applications and IoT platforms.

Kepware is a portfolio of industrial connectivity solutions that help businesses connect diverse automation devices and software applications. Utilizing a scalable, unified architecture, Kepware provides the flexibility to combine drivers and consume multiple protocols in a single server while offering a streamlined interface for simple installation, configuration, maintenance, and troubleshooting.



New to Kepware?
Learn more



SENSORS & INPUT DEVICES

PROCESS CONTROLS & SENSORS

Discrete and analog sensors are critical for automating any machine or process. A supply a wide range of reliable, low-cost sensors to detect position, speed, proximity, pressure, temperature, level, flow, current, and voltage.

SOLO TEMPERATURE CONTROLLERS

SOLO standard single-loop temperature controllers. 1/32 DIN, 1/16 DIN, 1/8 DIN, or 1/4 DIN panel size.



SL4824-RR \$232

1/32 DIN, 2-line LED, current, voltage, RTD or thermocouple input, (2) 3A SPST relays output, 100-240 VAC operating voltage, RS-485.

SL4848-CR \$259

1/16 DIN, 2-line LED, current, voltage, RTD or thermocouple input, 4-20mA, 5A SPST relay, (2) 3A SPST relays output, 100-240 VAC operating voltage, RS-485.

SL4896-RRE \$284

1/8 DIN, 2-line LED, current, voltage, RTD, thermocouple or event input, (2) 5A SPDT relays, (2) 3A SPST relays output, 100-240 VAC operating voltage, RS-485.

SIGNAL CONDITIONERS/LIMIT ALARM

Signal Conditioners / Signal Isolators / Limit Alarms for signal integrity.



FC-11 \$246

4-20MA SIGNAL ISOLATOR. Loop-powered signal conditioner and isolator for 4-20mA signal. DIN-rail mountable.

FC-33 \$314

DC VOLTS/MA SIGNAL CONDITIONER. Signal conditioner, isolated, current or voltage input, current or voltage output, 24 VDC operating voltage, 35mm DIN rail or panel mount.

FC-IS0-C \$240

ENCODER SIGNAL CONDITIONER OPE. Signal conditioner, isolated, differential or single ended line driver input, open collector output, 7.8 to 24 VDC operating voltage, 35mm DIN rail or panel mount.

FC-R1 \$316

RTD TO 4-20MA CONVERTER. Temperature transmitter, isolated, RTD input, deg F or deg C, 4-20 mA output, 24 VDC operating voltage, 35mm DIN rail or panel mount

LEVEL SENSORS AND CONTROLLERS

We have a huge selection of sensors available to monitor the level of liquids, pellets, and powders in tanks and process systems.



LU23-00 \$1624

Flowline EchoSonic II ultrasonic liquid level sensor, 18ft (5.5m) sensing range, 4-20 mA, 14-28 VDC operating voltage, 2in male NPT process connection.

VFL75-100L-3H \$382

ProSense vibration fork liquid level switch, any orientation mount, 3.44in insertion length, 316L stainless steel wetted parts, -40 to 212 deg F, 3/4in male NPT process connection, switch PNP, 3-wire, N.O./N.C. complementary, 4-pin M12 quick-disconnect

SRP10CD00506 \$219

EMA Rotating Paddle Switch- Slotted type, L= 50mm, Shaft Material = SS 316 Power Supply 24VDC, 80°C, Plastic housing

DPTA-20-10B \$297

ProSense air differential pressure transmitter, -10.0 to +10.0in of water column range, 4-20 mA analog output, 1/4in brass barbed process connection, 12 to 36 VDC operating voltage, screw terminals, 35mm DIN rail or panel mount.

SENSORS & INPUT DEVICES

ENCODERS, LIMIT SWITCHES & TRANSDUCERS

Need help with selecting a sensor? Get in touch with our technical support team on 1800 633 040



AC CURRENT TRANSDUCERS

ACT050-42L-F \$220
 AcuAMP AC current transducer, 1-phase, fixed core, 0-10, 0-20, or 0-50A selectable sensing range, 4-20mA output.



DC CURRENT TRANSDUCERS

DCT200-42-24-F \$336
 AcuAMP DC current transducer, fixed core, 0-100, 0-150, or 0-200A selectable sensing range, 4-20mA output.



ENCODERS

We have a huge selection of sensors available to monitor the level of liquids, pellets, and powders in tanks and process systems.

TRD-SR360AD \$204
 Koyo TRD-SR series incremental (quadrature) rotary encoder, light duty, 5-26 VDC, radial exit, NPN open collector output, 360 ppr, 6mm solid shaft, 38mm diameter body, IP50, 6.5ft/2m cable length, pigtail.

TRD-SHR1000A5D \$218
 Koyo TRD-SR series incremental (quadrature) rotary encoder, light duty, 5-26 VDC, radial exit, NPN open collector output, 1000 ppr, 8mm hollow shaft, 38mm diameter body, IP50, 6.5ft/2m cable length, pigtail.

TRD-SHR500A5D \$218
 Koyo TRD-SR series incremental (quadrature) rotary encoder, light duty, 5-26 VDC, radial exit, NPN open collector output, 500 ppr, 8mm hollow shaft, 38mm diameter body, IP50, 6.5ft/2m cable length, pigtail.

TRD-GK500-RZD \$754
 Koyo TRD-GK series incremental (quadrature) rotary encoder, heavy duty, 10-30 VDC, axial exit, push-pull (totem) output, 500 ppr, 10mm solid shaft, 78mm diameter body, IP65, 6.5ft/2m cable length, pigtail.



LIMIT SWITCHES

Limit switches are suitable for a wide range of applications and harsh environments due to their ease of installation, reliability, and rugged design. Heavy duty and double-insulated models also available.

AEM2G51Z11-3 \$80
 AutomationDirect compact limit switch, side rotary adjustable lever with 18mm nylon roller, (1) N.O./(1) N.C. contact(s), snap action, 25mm hole spacing, zinc alloy, pigtail, 9.8ft/3m cable length, bottom exit.

AEM2G21Z11-3 \$73
 AutomationDirect compact limit switch, metal plunger with fixing nuts, (1) N.O./(1) N.C. contact(s), snap action, 25mm hole spacing, zinc alloy, pigtail, 9.8ft/3m cable length, bottom exit.

AEM2G15Z11-3 \$75
 AutomationDirect compact limit switch, metal plunger with nylon cross roller, (1) N.O./(1) N.C. contact(s), snap action, 25mm hole spacing, zinc alloy, pigtail, 9.8ft/3m cable length, bottom exit.



SINGLE FOOT SWITCHES

APS1211-V0 \$138
 AutomationDirect electric foot switch, single, ABS plastic foot guard(s), yellow, momentary, (1) N.O. and (1) N.C. snap action contact, ABS plastic operator, safety anti-trip pedal, gray, ABS plastic base.



DOUBLE FOOT SWITCHES

APD1231-V0 \$318
 AutomationDirect electric foot switch, double, ABS plastic foot guard(s), (1) yellow and (1) gray, momentary, (1) N.O. and (1) N.C. snap action contact per switch, ABS plastic operator, safety anti-trip pedal, gray, ABS plastic base.

SENSORS & INPUT DEVICES

PROXIMITY SENSORS

We supply a range of general-purpose photoelectric sensors, in tubular or rectangular body styles, suitable for many presence sensing applications.



INDUCTIVE SENSORS

Inductive proximity sensors detect the presence of metallic objects at close range (typically inches). Ferrous metals allow the greatest sensing distances; other metals may reduce detection range.

AK1-AP-1A **\$51**

Micro Detectors inductive proximity sensor, tubular, 18mm diameter x 50mm body, nickel-plated brass housing, PNP, N.O. output, 5mm sensing distance, flush, 600 Hz switching frequency, IP67, pigtail.

AK1-AP-1H **\$55**

Micro Detectors inductive proximity sensor, tubular, 18mm diameter x 64mm body, nickel-plated brass housing, PNP, N.O. output, 5mm sensing distance, flush, 600 Hz switching frequency, IP67, 4-pin M12 quick-disconnect.



CAPACITIVE SENSORS

Capacitive sensors detect both metal and non-metal objects, can sense through insulating materials, and are often used to detect fill levels of liquids, pellets, and powders through container walls.

CT1-AP-1A **\$231**

Micro Detectors capacitive proximity sensor, tubular, 30mm diameter x 71mm body, nickel-plated brass housing, PNP, N.O. output, 15mm sensing distance, flush, 100 Hz switching frequency, IP65, pigtail.

CT1-CP-2A **\$231**

Micro Detectors capacitive proximity sensor, tubular, 30mm diameter x 71mm body, nickel-plated brass housing, PNP, N.C. output, 20mm sensing distance, non-flush, 100 Hz switching frequency, IP65, pigtail.



ULTRASONIC PROXIMITY SENSORS

Ultrasonic sensors emit a sound impulse and measure the elapsed time of the echo from an object. They sense most materials and are unaffected by colour, transparency, shininess, or lighting conditions.

UK1A-G7-0E **\$282**

Micro Detectors ultrasonic proximity sensor, tubular, 18mm diameter x 91.6mm body, polybutylene terephthalate housing, PNP, 0-10 VDC analog output, N.O./N.C. selectable output, 50-400mm sensing distance, 10 Hz switching frequency, IP67, 5-pin M12 quick-disconnect.



GENERAL PHOTOELECTRIC SENSORS

We have a huge selection of sensors available to monitor the level of liquids, pellets, and powders in tanks and process systems.

CX3-AN-1F **\$127**

AutomationDirect photoelectric sensor, rectangular, diffuse, infrared light emission, 600mm sensing distance, light-on, NPN, potentiometer, 1 kHz switching frequency, plastic housing, 3-pin M8 quick-disconnect. Purchase cable separately

CXP-AN-1F **\$133**

AutomationDirect photoelectric sensor, rectangular, polarized retroreflective, visible red light emission, 2m sensing distance, dark-on, NPN, potentiometer, 3-wire, 3-pin M8 quick-disconnect. Purchase reflector and cable separately

HEE-00-3A **\$100**

AutomationDirect photoelectric sensor, tubular, threaded, stainless steel housing, through-beam emitter, infrared light emission, 1m sensing distance, 10-30 VDC operating voltage, 2-wire, pigtail.

PRODUCT POINTERS

POWER SUPPLIES, ENCLOSURES

NEW! ACHIEVE PSA SERIES SWITCHING POWER SUPPLY

AchieVe PSA series power supplies are designed for price-sensitive users who require basic yet reliable power output for general industrial applications. Their overcurrent protection is designed to operate in constant current mode, making the PSA series suitable for inductive and capacitive load applications.



SLIM 6MM RELAY

PSA-24-75 \$58

AchieVe PSA series switching power supply, 24 VDC @ 3.125A/75W, 120/240 VAC nominal input, 1-phase, enclosed, plastic housing, 35mm DIN rail mount, screw terminals.

PSA-24-120 \$75

AchieVe PSA series switching power supply, 24 VDC @ 5A/120W, 120/240 VAC nominal input, 1-phase, enclosed, aluminum housing, 35mm DIN rail mount, screw terminals.

PSA-24-240 \$139

AchieVe PSA series switching power supply, 24 VDC @ 10A/240W, 120/240 VAC nominal input, 1-phase, enclosed, aluminum housing, 35mm DIN rail mount, screw terminals.

PSA-24-480 \$265

AchieVe PSA series switching power supply, 24 VDC @ 20A/480W, 120/240 VAC nominal input, 1-phase, enclosed, aluminum housing, 35mm DIN rail mount, screw terminals.



FREE TECH SUPPORT!

1800 633 040

ENCAPSULATED DC TO DC CONVERTER

PSRP-24-DC24-150 \$408

RHINO PRO DC to DC converter, 9-36 VDC input, 24 VDC output, 6.3A, 150W, aluminum housing, encapsulated, chassis mount, screw terminal.



ENCLOSURES

IP66 STEEL WALL-MOUNTING ENCLOSURE

MSB303020G \$197

IP66 STEEL WALL-MOUNTING ENCLOSURE 300HX300WX200MM Compact surface wall-mounting enclosure, single door, 5-mm double-bit lock, coated with hardened polyester powder coat, textured 80-120 µ. with UV protection.



STAINLESS STEEL ENCLOSURE

BS40630-6 \$1628

IP66 ELSTEEL ENCLOSURE 400WX600HX300Dmm Wet grinding (180), 120-degree door opening angle and is equipped with 2 stainless steel double wing locks. Continuous formed polyurethane sealing gasket. 1.2mm thickness.



* For shipments requiring the use of road freight (heavy items such as motors over 25 Kg. or enclosures over 20 Kg.), place order before 4 p.m. EST the day before.

WEG Switchgear CWB Contactors



COMPACT IN SIZE.
GIANT IN TECHNOLOGY...

Accessories Compatible with the whole CWB line...

allows the assembly of compact starters with the MPW18, MPW40 and MPW80 motor protective circuit breakers and RW27-D and RW67-5D thermal relays. Choice of up to six auxiliary contacts. Compatible accessories also include, "Zero" mechanical interlocking sets, BLB, BLRB side mounting auxiliary contact blocks, quick connection Busbars for star delta and reversing starters.

CONTACTORS- CWB SERIES

Up to 80A / 45kW (AC-3)
Built-in 1NO + 1NC
Low Consumption DC Coils
Wide range of accessories
Type 1 / Type 2 coordination



CWB9-11-30D25 \$25
Contactor 9 Amps 3 N.O Power poles Coil voltage 240 VAC 1 N.O / 1 N.C Auxiliary Contact

CWB32-11-30D25 \$53
Contactor 32 Amps 3 N.O Power poles Coil voltage 240 VAC 1 N.O / 1 N.C Auxiliary Contact

CWB40-11-30D25 \$101
Contactor 40 Amps 3 N.O Power poles Coil voltage 240 VAC 1 N.O / 1 N.C Auxiliary Contact

CWB50-11-30D25 \$113
Contactor 50 Amps 3 N.O Power poles Coil voltage 240 VAC 1 N.O / 1 N.C Auxiliary Contact

CWB65-11-30D25 \$132
Contactor 65 Amps 3 N.O Power poles Coil voltage 240 VAC 1 N.O / 1 N.C Auxiliary Contact

CWB80-11-30D25 \$145
Contactor 80 Amps 3 N.O Power poles Coil voltage 240 VAC 1 N.O / 1 N.C Auxiliary Contact

See our online store for the full selection of CWB range and our complete line up of WEG Motor Control and Circuit Protection. We also offer a large selection of Pushbuttons, Selector Switches, Pilot Lights and Control Stations. We continue to stock the Mini CWC, CWM lines of contactors and relays.



THERMAL OVERLOADS- CWB SERIES

Bimetallic Amb. Compensated
Convertible Manual/Auto Reset
Setting Ranges Up To 840 Amps
Tripping Class 10A
UL, IEC, CE Approvals



RW27-2D3-D063 \$38
Thermal overload relay bi-metallic adjustable FLA range 4.0- 6.3 Amps tripping class 10 phase loss sensitive, 45 mm frame hand/ Auto / Reset button.

RW27-2D3-U040 \$50
Thermal overload relay bi-metallic adjustable FLA range 32-40 Amps tripping class 10 phase loss sensitive, 45 mm frame hand/ Auto / Reset button.

MOTOR CIRCUIT BREAKERS- CWB SERIES

Up to 100A / 55kW
Adjustable Thermal Protection
Fixed Magnetic Protection
13 x lu Short-Circuit Release
Type 1 / Type 2 coordination



MPW18-3-D063 \$42
Thermomagnetic Circuit Breaker 3 N.O Power Poles with Pushbutton ON/OFF (Range 4.0-6.3A)

MPW40-3-U040 \$88
Thermomagnetic Circuit Breaker 3 Normally open Power poles 45 mm frame width rotary actuator 32-40 Amps FLA thermal overload trip rating

ELECTRONIC OVERLOAD RELAYS- CWB SERIES

Solid State overload protection up to 840A / 450kW
Wide current settings
Adjustable Thermal Class (10, 20 or 30)
Self-Supplied Remote Reset

RWB40E-3-A4U025 \$151
Electronic Solid State Relays adjustable FLA range 5-25 A adjustable trip class 10,20,30 manual / automatic reset mode phase loss and phase unbalance protection 1 N.O / 1 N.C auxiliary contacts





**NEVER CONSIDERED WEG FOR YOUR SWITCHGEAR?
PERHAPS IT'S TIME YOU MADE THE SWITCH...**



PUSHBUTTONS, SELECTOR SWITCHES & PILOT LIGHTS

These user-friendly and durable pilot devices are used in many industrial applications and environments. IP66, 4X rated (totally insulated) and includes a complete line of accessories.

CSW-BF2-1000000-3VF \$6
22mm Flush Pushbutton, Green + Flange + 1 N/O Auxiliary Contact.



MDWH CIRCUIT BREAKERS

- Up to 63A
- Trip curve B or C
- MCB in 1, 2, 3 and 4 poles
- 10kA short circuit breaking capacity (5kA also available)

MDWH-C32 \$10
1P Mini Circuit Breaker C Class 32A 10kA



EMERGENCY STOP STATIONS

PBW1Y-G11V03 \$26
Emergency Stop Station with 1 N/O and 1N/C contacts, with a legend plate built into an IP66 enclosure.



MULTI-FUNCTIONAL TIMER RELAYS AND ELECTRONIC RELAYS

ERWT-MF1-02MT1E05 \$125
2 N. O / 2 N.C contacts. 8 selectable functions inc Star-Delta. 24 - 240V AC/DC

RPW-FSFD66 \$82
Protection Relay Phase Loss/Seq



CONTROL STATIONS

CSW-PBW-1Y \$14
1 Hole Yellow or Grey Colour

CSW-PBW-6 \$33
6 Holes Gray Colour

CSW-PBW-4 \$23
4 Holes Gray Colour



ENCLOSED DIRECT ON-LINE STARTERS

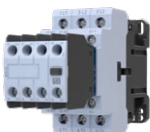
IP65 surface mount enclosed contactor assembled with thermal overload relay & pre wired control circuit. Knock-out suit M20 cable gland.
Available in various types of operation (On+Off; Remote; Reset; HAND/OFF/AUTO switch) **Prices start from \$82 (DLW-B9D25P66-R55)**

ADDITIONAL CONTACT BLOCKS- CWB SERIES

BFB front mounting (2 or 4 contacts)
BLB/ BLRB side mounting (2 contacts, only 9mm wide)

Allows combinations that result in up to 6 auxiliary contacts per contactor. For use with CWB9 through to CWB80. Maximum 4 auxiliary contacts per contactor.

BFB-11 \$10 Aux. Contact (1NO + 1 NC)
BFB-20 \$10 Aux. Contact (2NO + 0 NC)
BFB-02 \$10 Aux. Contact (0NO + 2 NC)
BFB-22 \$19 Aux. Contact (2NO + 2NC)
BFB-40 \$19 Aux. Contact (4NO + 0NC)



BLB-11 \$13 Aux. Contact (1NO + 1 NC)
BLB-20 \$13 Aux. Contact (2NO + 0 NC)
BLB-02 \$13 Aux. Contact (0NO + 2 NC)
BLRB-11 \$13 Aux. Contact (1NO + 1 NC)
BLRB-20 \$13 Aux. Contact (2NO + 0 NC)
BLRB-02 \$13 Aux. Contact (0NO + 2 NC)



ACCESSORIES & SPARE PARTS- CWB SERIES

Surge suppressor blocks are easily mounted on the CWB contactors without requiring any kind of tools and without increasing volume.

The WEG mechanical interlock system enables the mechanical interlock between the contactors of the CWB line with "zero" additional side space, and it is possible to mount reversing starters of up to 125 A.

DIZB C26 \$13 Surge Suppressor Block 12-250 VDC
VRB E49 \$13 Surge Suppressor Block 24 VAC
VRB E50 \$13 Surge Suppressor Block 240 VAC
VRB D73 \$13 Surge Suppressor Block 415 VAC



IM1 \$6 Mechanical interlock block CWB 9 - 38
IM2 \$6 Mechanical interlock block CWB 40...125



AC VF DRIVES

DURAPULSE VARIABLE FREQUENCY DRIVES

**DURA
IIIIPULSE
GS10**



DURAPULSE GS10 MICRO AC DRIVES

Our most affordable and compact inverter drive with sensorless vector support. Enclosed.

- GS11N-20P2** **\$291**
230 VAC, 1/4hp with 1-phase input, SVC or V/Hz mode, A1 frame, RS-485, Modbus, 100kA SCCR.
- GS11N-21P0** **\$315**
230 VAC, 1hp with 1-phase input, SVC or V/Hz mode, B2 frame, RS-485, Modbus, 100kA SCCR.
- GS13N-40P5** **\$365**
460 VAC, 1/2hp with 3-phase input, SVC or V/Hz mode, A4 frame, RS-485, Modbus, 100kA SCCR.
- GS13N-45P0** **\$529**
460 VAC, 5hp with 3-phase input, SVC or V/Hz mode, C1 frame, RS-485, Modbus, 100kA SCCR.

**DURA
IIIIPULSE
GS20X**



DURAPULSE GS20 GENERAL AND GS20X WASHDOWN AC DRIVES

Take the best features of our popular GS2 series drives, add Sensorless Vector and Field Oriented Control, expand built-in I/O, and include an integrated PLC with optional Ethernet communications. GS20X models come in a NEMA 4X enclosure.

- GS21-20P2** **\$350**
230 VAC, 1/4hp with 1-phase input, SVC, V/Hz, FOC or torque mode, A1 frame, RS-485, Modbus, 100kA SCCR. Optional EtherNet/IP and Modbus TCP card available.
- GS21-21P0** **\$392**
230 VAC, 1hp with 1-phase input, SVC, V/Hz, FOC or torque mode, B2 frame, RS-485, Modbus, 100kA SCCR. Optional EtherNet/IP and Modbus TCP card available.
- GS21X-20P5** **\$619**
NEMA 4X, 230 VAC, 1/2hp with 1-phase input, SVC, V/Hz, FOC or torque mode, A frame, RS-485, Modbus, 100kA SCCR. Optional EtherNet/IP and Modbus TCP card available.
- GS23X-40P5** **\$753**
NEMA 4X, 460 VAC, 1/2hp with 3-phase input, SVC, V/Hz, FOC or torque mode, A frame, RS-485, Modbus, 100kA SCCR. Optional EtherNet/IP and Modbus TCP card available.

**DURA
IIIIPULSE
GS4**



DURAPULSE GS4 SERIES HIGH-PERFORMANCE AC DRIVES

DURApulse GS4 AC Sensorless Vector Drives handle applications up to 300hp. Economical and compact, these high performance drives offer advanced features such as Safe Torque Off (STO), a built-in PLC (up to 10k steps) and built-in I/O capabilities.

- GS4-21P0** **\$1206**
NEMA 1, 230 VAC, 1hp with 3-phase input, 1/2hp with 1-phase input, SVC or V/Hz mode, A frame, RS-485, Modbus and BACnet, 100kA SCCR. Optional EtherNet/IP and Modbus TCP cards available.
- GS4-23P0** **\$1462**
NEMA 1, 230 VAC, 3hp with 3-phase input, 1hp with 1-phase input, SVC or V/Hz mode, A frame, RS-485, Modbus and BACnet, 100kA SCCR. Optional EtherNet/IP and Modbus TCP cards available.
- GS4-42P0** **\$1312**
NEMA 1, 460 VAC, 2hp with 3-phase input, SVC or V/Hz mode, A frame, RS-485, Modbus and BACnet, 100kA SCCR. Optional EtherNet/IP and Modbus TCP cards available.
- GS4-4010** **\$2098**
NEMA 1, 460 VAC, 10hp with 3-phase input, SVC or V/Hz mode, B frame, RS-485, Modbus and BACnet, 100kA SCCR. Optional EtherNet/IP and Modbus TCP cards available.

SAFETY PRODUCTS

SAFETY COMPONENTS FOR EQUIPMENT PROTECTION

SAFETY GATE RELAYS



LG5925-48-61-24 \$339
Dold safety relay, emergency stop and safety gates, 2-channel, 24 VAC/VDC, (3) N.O. safety output(s), (1) N.C. monitoring output(s), fixed screw terminals.

NON-CONTACT CODED MAGNETIC SAFETY SWITCHES



CMC-F-135006 \$525
IDEM safety switch set, non-contact coded magnetic, rear mount, (2) N.C. safety output(s), (1) N.O. monitoring output(s), 316 stainless steel housing, 83 x 20mm, pigtail, 16.4ft/5m cable length.

TONGUE (KEY) INTERLOCK AND CABLE-PULL SAFETY SWITCHES



KM-203002 \$176
IDEM safety switch, tongue (key) interlock, 90-degree adjustable head, (2) N.C. safety output(s), (1) N.O. monitoring output(s), 40 x 118 x 41mm, die-cast aluminum body, die-cast aluminum head.

TONGUE INTERLOCK SAFETY SWITCHES



SP2K120X11 \$47
Comepi safety switch, tongue (3-prong key) interlock, 360-degree adjustable head, (1) N.C. safety output(s), (1) N.O. monitoring output(s), 30 x 98 x 30mm, plastic body, plastic head.

HUGE SELECTION- CHECK ONLINE STORE



Warning: Safety products sold by AutomationDirect are Safety components only. The purchaser/installer is solely responsible for the application of these components and ensuring all necessary steps have been taken to assure each application and use meets all performance and applicable safety requirements and/or local, national and/or international safety codes as required by the application. AutomationDirect cannot certify that our products, used solely or in conjunction with other AutomationDirect or other vendors' products, will assure safety for any application. Any person using or applying any products sold by AutomationDirect is responsible for learning the safety requirements for their individual application and applying them, and therefore assumes all risks, and accepts full and complete responsibility, for the selection and suitability of the product for their respective application.

Direct Automation Pty Ltd (Australia) does not provide design or consulting services, and cannot advise whether any specific application or use of our products would ensure compliance with the safety requirements for any application.

VISUAL & AUDIBLE DEVICES

TOWER LIGHTS AND SOUND MODULES



70mm TOWER & LIGHTS

0570TBS01KH \$12
Black Standard Cone Base with tube length 10mm.

0570RDWFH \$26
70mm Red Light Module (12-24VDC), continuous or flashing.



30mm TOWER & LIGHTS

0530TBS01W \$15
White S-Type with Cap - Standard cone base with tube length 10mm

0530RDWL \$14
30mm Red Light Module (12/24VDC) continuous.



SOUND ELEMENTS 70mm

0570ZDWFKH \$20
Audible beeper element, up to 85dB at 1m, continuous or intermittent sounds.

0570PDWAK \$49
Audible music or messaging element 85dB at 1m, 12-24VDC.

WIRING SOLUTIONS

TERMINAL BLOCKS, CABLING & ZIPLINK SOLUTIONS

DIN RAIL

Durable Steel DIN Rail and Lightweight Aluminum DIN rail
Various sizes including 35mm
1m length

DN-R35S1-2 \$48

DINnector DIN rail, slotted, 35mm, 7.5mm height, 1m length, plated steel. Package of 2.

DN-R35S1 \$172

DINnector DIN rail, slotted, 35mm, 7.5mm height, 1m length, plated steel. Package of 10.

DN-R35SAL1-2 \$60

DINnector DIN rail, slotted, 35mm, 10mm height, 1m length, aluminum. Package of 2.

DN-R35SAL1 \$180

DINnector DIN rail, slotted, 35mm, 10mm height, 1m length, aluminum. Package of 10.

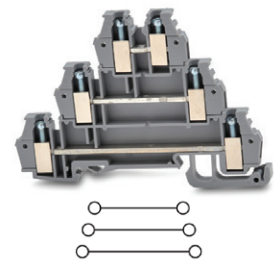
DN-CLIP-FM4-5 \$20

DIN rail clip, zinc plated steel, used to mount items to 35mm DIN rail, 4mm mounting hole size. Package of 5.



TRIPLE-LEVEL FEEDTHROUGH TERMINAL BLOCKS

DINnectors DN series screw-type
Currents up to 10A
Wire sizes from 26 AWG to 14 AWG
10kA SCCR rating
35mm DIN rail mount



DN-TL14-A \$153

DINnector screw triple-level feedthrough terminal block, gray, Package of 25.

DN-12JL14B-A \$54

DINnector terminal block jumper, push-in type, 12-pole, blue, 20A, 300V rated (UL). Package of 10.

DN-EC14 \$39

DINnector terminal block end cover, gray. Package of 25.

DN-LATB-A \$74

DINnector marking tag, 5 x 6mm, blank. Package of 500.

ZIPLink

Wiring can be a very time-consuming task. The ZIPLink wiring solution eliminates the need for hand wiring every I/O point in the control panel. Simply plug one end of a ZIPLink pre-wired cable into a supporting PLC or I/O module and the other end into a ZIPLink connector module and all the connections are made. Connect field wiring to the connector module and the I/O circuits are complete.

PRODUCTIVITY1000 ZIPLINKS

ZL-RTB20 \$58

ZIPLink feedthrough module, 20-pole, DIN rail mount.

Feedthrough modules provide low-cost and compact field wiring screw termination solutions allowing quick connection with ZIPLink cables to PLC I/O modules.

BRX ZIPLINKS

ZL-BX-CBL40-S \$66

ZIPLink PLC I/O cable, 40-pin connector to 40-pin connector, shielded, 1.6ft/0.5m cable length. For use with BRX series high-speed modules.



BRX CPU with expansion modules and ZIPLink ZL-RTB20 feedthrough module.

CLICK ZIPLINKS

ZL-RFU20 \$268

ZIPLink fuse module, 16-point, user-supplied external fuse, 0-75 VDC/0-250 VAC, 2A/ circuit, DIN rail mount.

Fuse modules provide fuse protection for PLC output devices. Use with Do-more, CLICK, DL05/06/205/305/405 PLCs.

HANDTOOLS

FROM GLOBALLY TRUSTED BRANDS

NEW!

We've added over a hundred tools from trusted brands for your industrial and commercial applications. Our new range includes a wide selection of high-quality screwdriving and tightening tools as well as wrenches, ratchets and socket sets.



STANDARD SCREWDRIVERS AND SETS

TW-SD-SET-1 \$90
Wera Kraftform Plus 300 series screwdriver set, 6 pieces.

TW-SD-SL-1 \$12
Wera Kraftform Plus 3.0mm slotted standard screwdriver, 3.1in (80mm) shaft length.

05008715055 \$25
Wera Kraftform Plus #1 Phillips standard screwdriver, 11.8in (300mm) shaft length.



INSULATED SCREWDRIVERS AND SETS

TW-SD-SET-2 \$99
Wera Kraftform Plus 100 VDE series insulated screwdriver set, 6 pieces, 1000V insulation rating.

TW-SD-VSL-1 \$12
Wera Kraftform Plus 2.5mm slotted insulated screwdriver, 1000V insulation rating, 3.1in (80mm) shaft length.

05006440055 \$27
Wera Kraftform Plus 3.5mm slotted insulated screwdriver, 1000V insulation rating, 3.9in (100mm) shaft length, reduced shank.



COMBINATION WRENCHES AND WRENCH SETS

05020013055 \$687
Wera Joker ratcheting combination wrench set, metric, 11 pieces, includes 8, 10, 11, 12, 13, 14, 15, 16, 17, 18 and 19mm wrenches. Durable cloth pouch included.

05073268055 \$48
Wera Joker combination wrench, ratcheting, 8mm, 9.3in (235mm) overall length, special nut holding feature and fine tooth ratchet.



WRENCHES, RATCHETS AND SOCKET SETS

05004018055 \$248
Wera socket set with Zyklop Metal switch lever ratchet, 1/4in drive, metric, 28 pieces.

05004004055 \$102
Wera Zyklop Metal ratchet, switch lever, 1/4in drive, 5 degree return angle, all-metal construction.



HUGE SELECTION- CHECK OUR ONLINE STORE



05022639055 \$121
Wera multicolor L-key hexdrivers



151NAS \$54
Megapro multi-bit screwdriver



TW-TD-11-29 \$197
Wera adj. torque screwdriver



TW-DB-SET-SD1 \$98
Wera driver bit 8 piece set

SYSTEM INTEGRATORS

Do you need local service and support for your Direct Automation equipment or projects?



As primarily a supply company, our SI Direct program strives to extend our customer service and support into the field of industrial automation. We have connected with experienced system integration services who are fully versed in our core product range. Members of our system integrator program have demonstrated specific product and application expertise with particular emphasis on our Programmable Controller, HMI and Motion Products.

VICTORIA

AUTOMATION ASAP 03 9551 8383	DW Controls Pty Ltd 03 5336 2018
--	--

QUEENSLAND

CWE Automation 0481 322 144	Tesla Edison 0434 643 408	AM Automation Pty Ltd 0410 685 522
---------------------------------------	-------------------------------------	--

WESTERN AUSTRALIA

Dalin Electrical Controls 0402 825 363	KAPP Engineering Pty Ltd 08 6103 1234	ASAP Power Pty Ltd 0420 226 880	WestWater Enterprises Pty Ltd 08 9248 2411
--	---	---	--

NEW SOUTH WALES

Anything Electrical 0412 461 276	Redare 02 6688 2140	Dark Knight Electrical 02 9755 1166	Logic Automation 0409 081 218
Mat-Tech Electrical 02 6642 7599	MS Industrial 0423 700 599	Kelycon Electrical 02 9680 3868	Griffith Electronic Services 02 6964 2200

SOUTH AUSTRALIA

iMove Enterprises
08 8162 9666

NEW ZEALAND

IGP Systems Ltd 64 2 1962220	Prolec Automation & Electrical Services Ltd 64 9 2732233
--	--

SOUTH-EAST ASIA

Bestari Integration Sdn Bhd
+6011 3996 8663



(AUS) 1800 633 040
(NZ) 0800 633 040

22 Leonard Parade
Currumbin Waters
QLD, 4223

ABN 86 641 073 458

www.directautomation.com.au



AUTOMATION | COMMUNICATIONS | INDUSTRIAL IOT | PROCESS | SWITCHGEAR | TOOLS

MAY 2024. This publication may contain references to products produced and/or offered by other companies. The product and company names may be trademarked and are the sole property of their respective owners. Direct Automation Pty Ltd disclaims any proprietary interest in the marks and names of others. All prices shown are trade prices and are exclusive of GST. Prices are subject to change, orders will be accepted at the pricing ruling at the time of our acceptance of orders. Please refer to our online store for current prices. Images for display purposes only and may be generic.