

# Connection Cables - Sensor and Signal

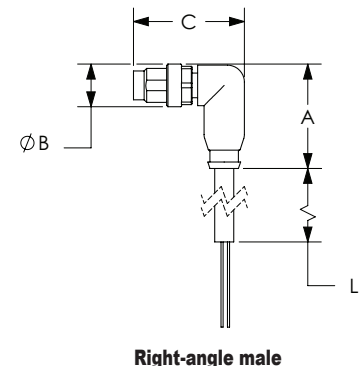
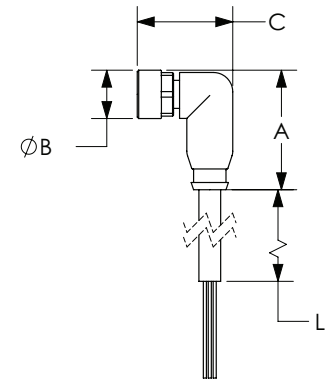
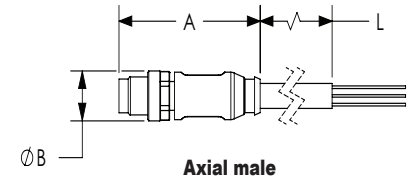
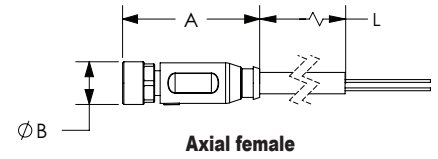
## M8 A-coded Cable to Pigtail

### Features

- Industry-standard axial and right-angle M8 screw-lock connectors with open leads
- Cables listed can be used with patch cables
- 1.5m [4.9 ft], 2m [6.5 ft], 5m [16.4 ft], 7m [23 ft], and 10m [32.8 ft] cable lengths
- PVC (polyvinyl chloride) jacketed cable for general use and chemical washdown applications, ex. food & beverage industry
- PUR (polyurethane) jacketed cable for applications with exposure to oil and dynamic applications requiring more flexibility
- PP (polypropylene) wire insulation for low temperature applications



### Dimensions



M8 A-coded Cable to Pigtail													
Part Number	Price	Number of Wires	Connector	Cable Jacket/ Wire Insulation Material	Jacket Color	Dimensions							
						A	B	C	L				
						mm			m [ft]				
<a href="#">CD08-0A-020-A1</a>	\$11.00	3	Axial female	PVC/PVC	Gray	32	10	-	2				
<a href="#">CD08-0A-020-C1</a>	\$11.00		Right-angle female			25	10	20	[6.5]				
<a href="#">CD08-0A-050-A1</a>	\$14.00		Axial female	PUR/PP	Black	32	10	-	5 [16.4]				
<a href="#">CD08-0A-050-C1</a>	\$14.00		Right-angle female			25	10	20					
<a href="#">CD08-0C-050-A1-A</a>	\$14.00		Axial female	PUR/PVC	Gray	32	10	-	7 [23]				
<a href="#">CD08-0C-050-C1</a>	Retired		Right-angle female	PUR/PVC		25	10	20					
<a href="#">CD08-0C-050-C1-A</a>	\$14.00		Right-angle female	PUR/PP	25	10	20						
<a href="#">CD08-0A-070-A1</a>	\$18.00		Axial female	PVC/PVC	Gray	32	10	-	7 [23]				
<a href="#">CD08-0A-070-C1</a>	\$18.00		Right-angle female			25	10	20					
<a href="#">7000-08001-0200200</a>	\$9.50		Axial male	PUR/PVC	Yellow	Gray	39	10	-	2 [6.5]			
<a href="#">7000-08001-0300200</a>	\$10.00		Axial male	PUR/PP			39	10	-				
<a href="#">7000-08021-0200200</a>	\$9.50		Right-angle male	PUR/PVC			25	10	26				
<a href="#">7000-08021-0300200</a>	\$10.00		Right-angle male	PUR/PP			25	10	26				
<a href="#">7000-08001-0300500</a>	\$11.00		Axial male	PUR/PP			39	10	-		5 [16.4]		
<a href="#">7000-08021-0200500</a>	\$10.50		Right-angle male	PUR/PVC			25	10	26				
<a href="#">7000-08021-0300500</a>	\$11.00		Right-angle male	PUR/PP			25	10	26				
<a href="#">7000-08001-0201000</a>	\$18.50		Axial male	PUR/PVC			39	10	-		10 [32.8]		
<a href="#">7000-08001-0301000</a>	\$19.00		Axial male	PUR/PP			39	10	-				
<a href="#">7000-08021-0201000</a>	\$18.50		Right-angle male	PUR/PVC			25	10	26				
<a href="#">7000-08021-0301000</a>	\$19.00		Right-angle male	PUR/PP			25	10	26				
<a href="#">7000-08001-2100200</a>	\$7.50		Axial male	PVC/PVC			Gray	39	10		-	2 [6.5]	
<a href="#">7000-08021-2100200</a>	\$7.50		Right-angle male					25	10		26		
<a href="#">7000-08001-2100500</a>	\$8.75		Axial male	PVC/PVC			Gray	39	10		-	5 [16.4]	
<a href="#">7000-08021-2100500</a>	\$8.75		Right-angle male					25	10		26		
<a href="#">7000-08001-2101000</a>	\$14.00	Axial male	PVC/PVC	Gray			39	10	-		10 [32.8]		
<a href="#">7000-08021-2101000</a>	\$14.00	Right-angle male					25	10	26				
<a href="#">7000-08041-0300200</a>	\$10.00	Axial female	PUR/PP	Gray			Gray	32	10		-	2 [6.5]	
<a href="#">7000-08081-0300200</a>	\$10.00	Right-angle female	PUR/PP					25	10		20		
<a href="#">7000-08041-0300500</a>	\$11.00	Axial female	PUR/PP					32	10		-		5 [16.4]
<a href="#">7000-08081-0200500</a>	Retired	Right-angle female	PUR/PVC					25	10		20		
<a href="#">7000-08081-0300500</a>	\$11.00	Right-angle female	PUR/PP					25	10		20		

Continued on next page.

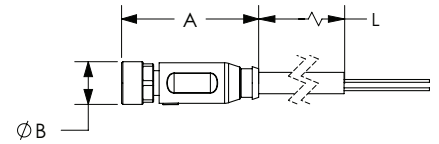
See our website: [www.AutomationDirect.com](http://www.AutomationDirect.com) for complete engineering drawings.

# Connection Cables - Sensor and Signal

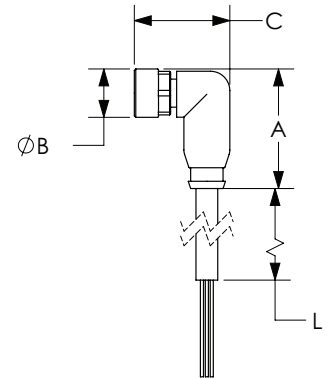
## M8 A-coded Cable to Pigtail (continued)

M8 A-coded Cable to Pigtail											
Part Number	Price	Number of Wires	Connector	Cable Jacket/Wire Insulation Material	Jacket Color	Dimensions					
						A	B	C	L		
						mm			m [ft]		
<a href="#">7000-08041-0300700</a>	\$15.00	4	Axial female	PUR/PP	Yellow	32	10	-	7		
<a href="#">7000-08081-0200700</a>	\$14.00		Right-angle female	PUR/PVC		25	10	20	[22.9]		
<a href="#">7000-08081-0300700</a>	\$15.00		Right-angle female	PUR/PP		25	10	20			
<a href="#">7000-08041-2100500</a>	\$8.75		Axial female	PVC/PVC		Gray	32	10	-	5	
<a href="#">7000-08081-2100500</a>	\$8.75		Right-angle female				PUR/PVC	25	10	20	[16.4]
<a href="#">7000-08061-0310200</a>	\$10.00		Axial female	PUR/PP			32	10	-	2	
<a href="#">7000-08101-0210200</a>	\$9.75		Right-angle female	PUR-PVC/PVC	25		10	20	[6.5]		
<a href="#">7000-08101-0310200</a>	\$10.00		Right-angle female	PUR/PP	25		10	20			
<a href="#">7000-08061-0210500</a>	\$12.00		Axial female	PUR-PVC/PVC	32		10	-	5		
<a href="#">7000-08061-0310500</a>	\$13.00		Axial female	PUR/PP	32	10	-	[16.4]			
<a href="#">7000-08101-0210500</a>	Retired		Right-angle female	PUR-PVC/PVC	25	10	20				
<a href="#">7000-08101-0310500</a>	\$14.00		Right-angle female	PUR/PP	25	10	20	10			
<a href="#">7000-08061-0211000</a>	\$19.00		Axial female	PUR-PVC/PVC	32	10	-		[32.8]		
<a href="#">7000-08061-0311000</a>	\$20.00		Axial female	PUR/PP	32	10	-	10			
<a href="#">7000-08101-0211000</a>	Retired		Right-angle female	PUR-PVC/PVC	25	10	20		[32.8]		
<a href="#">7000-08101-0311000</a>	\$20.00		Right-angle female	PUR/PP	25	10	20				
<a href="#">CD08-0G-020-A1</a>	\$11.50		4	Axial female	PVC/PVC	Black	32	10	-	2	
<a href="#">CD08-0W-020-C1</a>	\$11.50			Right-angle female			PUR/PP	25	10	20	[6.5]
<a href="#">CD08-0G-050-A1</a>	\$14.00			Axial female			PUR/PVC	32	10	-	5
<a href="#">CD08-0W-050-C1</a>	\$14.00			Right-angle female			PUR/PP	25	10	20	[16.4]
<a href="#">CD08-0G-100-A1</a>	\$18.00			Axial female			PUR/PVC	32	10	-	10
<a href="#">CD08-0W-100-C1</a>	\$18.00			Right-angle female			PUR/PP	25	10	20	[32.8]
<a href="#">7000-08061-2110200</a>	\$8.75			Axial female		PUR/PP	Gray	32	10	-	2
<a href="#">7000-08101-2110200</a>	\$8.75			Right-angle female		PUR/PVC		25	10	20	[6.5]
<a href="#">7000-08061-2110500</a>	\$10.50	Axial female		PUR/PVC		32		10	-	5	
<a href="#">7000-08101-2110500</a>	\$10.50	Right-angle female		PUR/PP		25		10	20	[16.4]	
<a href="#">7000-08061-2111000</a>	\$14.50	Axial female		PUR/PVC		32		10	-	10	
<a href="#">7000-08101-2111000</a>	\$14.50	Right-angle female		PUR/PP		25		10	20	[32.8]	
<a href="#">7000-08941-6950150</a>	\$10.50	5		Axial female	PUR/PP	Black	34	10	-	1.5	
<a href="#">7000-08951-6950150</a>	\$10.50			Right-angle female			PUR/PVC	28	10	21	[4.9]
<a href="#">7000-08941-6950500</a>	\$19.00			Axial female			PUR/PP	34	10	-	5
<a href="#">7000-08951-6950500</a>	\$19.50			Right-angle female			PUR/PVC	28	10	21	[16.4]
<a href="#">7000-08941-6951000</a>	\$30.50			Axial female			PUR/PP	34	10	-	10
<a href="#">7000-08951-6951000</a>	\$31.50			Right-angle female			PUR/PVC	28	10	21	[32.8]

### Dimensions



**Axial female**



**Right-angle female**

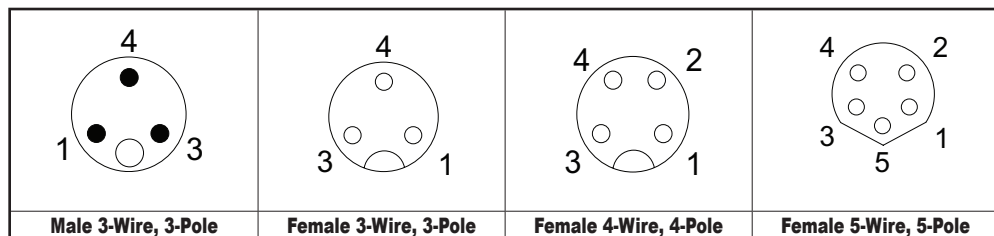
See our website: [www.AutomationDirect.com](http://www.AutomationDirect.com) for complete engineering drawings.

# Connection Cables - Sensor and Signal

M8 A-coded Cable to Pigtail Specifications					
Model	CD08 Series		7000 Series		
Type	3-Wire, 3-Pole	4-Wire, 4-Pole	3-Wire, 3-Pole	4-Wire, 4-Pole	5-Wire, 5-Pole
Max Voltage	50VAC / 60VDC				30 VAC/VDC
Max Voltage - UL Rating	N/A		30 VAC/VDC		
Max Current Per Contact	4A				3A
Protection Degree	IP65 / IP66K / IP67				IP67
Nut Material	Male threads are nickel plated brass; female threads are nickel plated die cast zinc				
Cable Jacket/Wire Insulation Material	PUR-PVC/PVC, PVC/PVC, PUR/PVC, or PUR/PP				PUR/PP
Contacts Material	Copper Alloy				
Tightening Torque	≤ 0.4 N·m [≤ 0.34 ft·lb]				
Conductors Cross Section	0.25 mm <sup>2</sup> [24AWG]				
Ø Outer Cable For PUR/PVC or PVC/PVC or PUR-PVC/PVC	3-Wire 4.5 mm [0.18 in] / 4-Wire 4.8 mm [0.19 in]				
Ø Outer Cable For PUR/PP	3-Wire 4.1 mm [0.16 in] / 4-Wire 4.5 mm [0.18 in]			5-Wire 4.7 mm [0.19 in]	
Temperature Range - Stationary Use	PUR-PVC/PVC, PVC/PVC and PUR/PVC -30 to 80°C [-22 to 176°F]; PUR/PP -40 to 80°C [-40 to 176°F]				
Temperature Range - Flexible Use	PUR-PVC/PVC, PVC/PVC and PUR/PVC -5 to 80°C [23 to 176°F]; PUR/PP -25 to 80°C [-13 to 176°F]				
Min Bend Radius	Stationary use: 5 x cable diameter; Flexible use: 10 x cable diameter				
Approvals*	CE, cCSAus		cULus, CE, UKCA, cCSAus		cURus

\*To obtain the most current agency approval information, see the Agency Compliance & Certifications Checklist section on the specific part number's web page.

## Contact Diagrams



## Wiring Diagrams

