

# USB to RS-485 PC Adapter

## USB-485M \$69.00

Convenient 2-wire USB to RS-485 serial communication adapter for universal RS-485 use (GS drives, SureServo servos, Solo temperature controllers, CLICK PLCs, etc.). Does not require an external power supply or complicated configuration process.

### Features:

- Type A (plug) USB connector
- Universal female RJ45/RJ12 modular connector (accepts RJ12 & RJ45 plugs)
- Supports multiple baud rates
- USB v2.0 compliant
- RoHS compliant
- CE compliant

### Components Included:

- Adapter
- Cable – 6-wire RJ12 crossover; 2m [79 in] (for plug & play connectivity to GS drives)
- Cable – 2-wire RJ12–flying leads; 2m [79in] (for universal RS-485 connectivity to SureServo, Solo, etc.)

Specifications	
<b>Description</b>	USB TO RS-485 PC Adapter; includes (2) RJ12 cables, instructions
<b>Component Compatibility *</b>	GS series AC drives – GSOF2/GSOFT2 configuration software & Modbus polling Ironhorse AC drives – VFD Suite configuration & Modbus polling Toshiba AS3 AC drives – ASD Pro configuration software & Modbus polling SureServo(2) servo drives – SV(2)-PRO configuration software & Modbus polling** SOLO process controllers – SL-SOFT configuration software SOLO process controllers – Modbus polling CLICK PLCs – Modbus polling Productivity PLCs – Modbus polling
<b>Power Supply</b>	No external power supply needed
<b>Power Consumption</b>	0.4 W
<b>Voltage Isolation</b>	3000 VDC
<b>Baud Rates Supported</b>	75, 150, 300, 600, 1200, 2400, 4800, 9600, 19200, 38400, 57600, 115200 (bps)
<b>Transmission Type</b>	RS-485 half-duplex (2-wire)
<b>LED Display</b>	Steady Green LED ON: power is ON. Blinking orange LED: data is transmitting.
<b>USB Connector</b>	Type A (plug)
<b>RS-485 Connector</b>	RJ45
<b>Compatibility</b>	USB v2.0 specification
<b>PC Compatibility</b>	Windows Operating System required for bridge & driver installation: 32-bit driver: Windows 7, 8, 8.1, 10 64-bit driver: Windows 7, 8, 8.1, 10

\* NOT compatible with DirectSOFT PLC software.

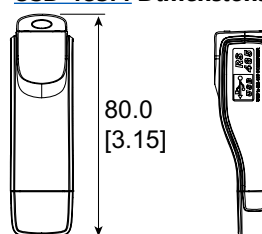
(DirectSOFT RS-485 programming requires 4-wire full-duplex data transmission.)

\*\* Requires SVC-485CFG-CBL-2 cable.

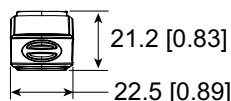
### USB-485M



### USB-485M Dimensions



UNITS:  
mm [in]



### USB-485M RJ-45 Pin-out



8 ← 1



RJ-45

Pinout	
Pin	Description
1	reserved
2	reserved
3	reserved
4	SG+
5	SG–
6	reserved
7	reserved
8	reserved