

## 2V系列二位二通电磁阀

2V Series Two-position Two-way Solenoid Valve



## 2V系列二位二通电磁阀

2V Series Two-position Two-way Solenoid Valve

### 订购代号/Ordering Code

**2V** - **025** - **08** - **AC220V**

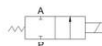
规格代号  
Specification Code  
2V:二位二通电磁阀  
2V:Two-position Two-way Solenoid Valve

流量孔径  
Aperture of Flow Rate  
025:2.5mm  
031:3.1mm  
130:13mm  
250:25mm

接管口径  
Joint Pipe Bore  
06:G1/8  
08:G1/4  
10:G3/8  
15:G1/2  
20:G3/4  
25:G1

标准电压  
Standard Voltage  
DC12V  
DC24V  
AC24V 50Hz/60Hz  
AC110V 50Hz/60Hz  
AC220V 50Hz/60Hz  
AC380V 50Hz/60Hz

### 图形符号/Graphic symbol



2V130-10



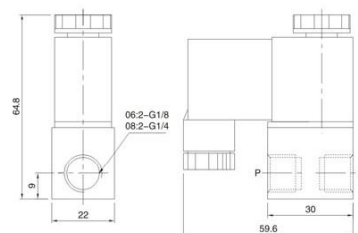
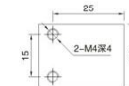
2V025-08

### 规格/Specification

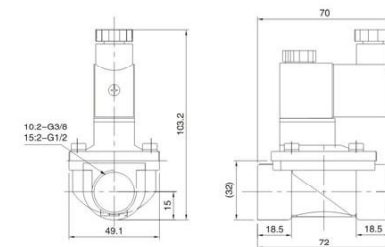
型号/Model	2V025-06	2V025-08	2V031-08	2V130-10	2V130-15	2V250-20	2V250-25
工作介质/Working Medium	空气、水、油/Air, Water, Oil						
动作方式/Motion Pattern	直动式/Direct Drive Type			先导式/Guide Type			
型式/Type	常闭式/Normal Close Type						
流量孔径(mm)/Aperture of Flow Rate	2.5		3.1	13		25	
CV值/CV Value	0.23			6.2		23	
接管口径/Joint Pipe Bore	G1/8	G1/4	G1/4	G3/8	G1/2	G3/4	G1
使用流体粘度/Operation Fluid Viscosity	20 CST 以下 (Below)						
使用压力(MPa)/Working-Pressure	空气、水、油/Air, Water, Oil:0.05-0.7						
最大耐压(MPa)/Max. Pressure Resistance	0.95MPa						
使用温度范围/Operating Temperature Range	-10-80°C						
使用电压范围/Voltage Range	±10%						
保护等级(Protection Class)/绝缘性(Insulation)	IP65/F级(F Class)						
耗电量/Power Consumption	AC: 6.5V/DC: 6.5W						
本体材质/Material of Body	铝或铜(镀镍处理)/Aluminum or Brass(Nickel Coated)						
油封材质/Material of Oil Seal	NBR或VITON/NBR or VITON						
最短励磁时间/Shortest Excitation Time	0.05						

### 外形尺寸/Overall Dimension

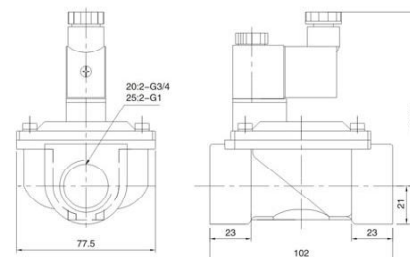
▶ TYPE: 2V025-06(08)



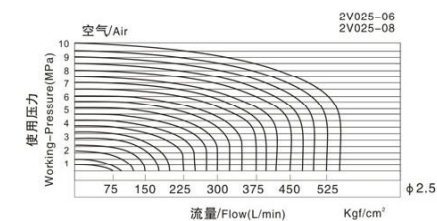
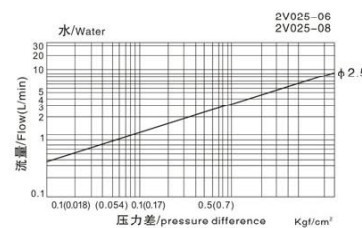
▶ TYPE: 2V130-10(15)



▶ TYPE: 2V250-20(25)



### 流量特性/Flowing Character



控制元件