

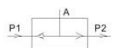
订购代号/Ordering Code

**KS - L6**

系列代码  
Series No  
KS-梭阀系列  
Shuttle  
Valve Series

接管口径  
Joint Pipe Bore  
M5:M5  
L3:M10 x 1  
L6:G1/8"  
L8:G1/4"  
L10:G3/8"  
L15:G1/2"  
L20:G3/4"  
L25:G1"

图形符号/GraPhic symbol



KS-M5



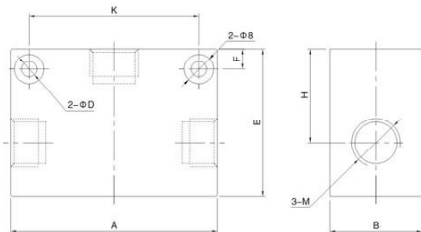
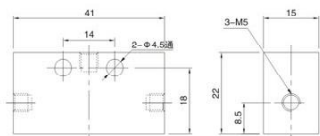
KS-L8

规格/Specification

型号/Model	KS-M5	KS-L3	KS-L6	KS-L8	KS-L10	KS-L15	KS-L20	KS-L25
工作介质/Working Medium	经40微米过滤的空气/40 Micron Filtered Air							
接管口径/Joint Pipe Bore	M5	M10 x 1	G1/8	G1/4	G3/8	G1/2	G3/4	G1
工作温度/Operating Temperature	0-60°C							
使用压力/Working-Pressure	0.05-0.8Mpa							
最大耐压力/Max.Precsure Resistance	1.2Mpa							

外形尺寸/Overall Dimension

▶ TYPE:KS-M5



尺寸表/Dimension Sheet

型号/Model	口径 Aperture	A	B	D	E	F	H	K	M
KS-L3	3	38	18	3.6	26	4	16	20	M10 x 1
KS-L6	6	56	25	4.8	40	9	26	36	M10 x 1(G1/8)
KS-L8	8	56	25	4.8	40	9	26	36	M12 x 1.25(G1/4)
KS-L10	10	70	34	7	50	10	32	48	M16 x 1.5(G3/8)
KS-L15	15	70	34	7	50	10	32	48	M20 x 1.5(G1/2)
KS-L20	20	95	50	7	75	10	48	72	M27 x 2(G3/4)
KS-L25	25	95	50	7	75	10	48	72	M33 x 2(G1)

订购代号/Ordering Code

**VVF15NO**

型号  
Model  
板式二通气控阀  
Plate type Two-way Pneumatic Control Valve



VVF15NO

图形符号/GraPhic symbol



规格/Specification

型号/Model	VVF15NO
流量口径/Orifice size	16
工作介质/Working Medium	经40微米过滤的空气/40 Micron Filtered Air
位置数/Position Number	二位二通/Two Position Two-way
接管口径/Joint Pipe Bore	G1/2"
工作温度/Operating Temperature	-5-60°C
使用压力范围/Working-pressure range	0.05-0.8Mpa

外形尺寸/Overall Dimension

