

LSF标准气缸附件

LSF Standard Cylinder Accessory

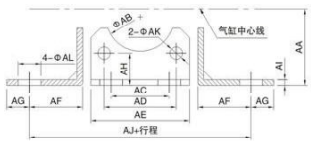


SDA系列薄型气缸

SDA Series Thin Type Cylinder

外形尺寸/Overall Dimension

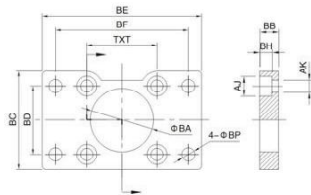
LB 脚架/ LB Foot Rest



尺寸表/Dimension Sheet

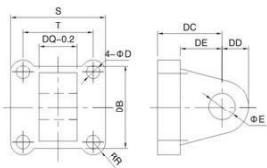
型号/内径 Symbol/Bore	32	40	50	63	80	100
AA	32	36	45	50	63	71
AB(mm)	30	35	40	45	45	55
AC	32	38	46	56	72	89
AD	32.5	38	46.5	56.5	72	89
AE	45	52	65	76	94	112
AF	24	28	32	31.5	41.5	41.5
AG	9	11	11	11	14	16
AH	15.8	17	21.8	21.8	27	26.5
AI	3.2	3.2	3.2	3.2	4	4
AJ	142	161	170	185	210	220
AK	6.5	6.5	8.5	8.5	10.5	10.5
AL	7	9	9	9	12	14

FA/ FB法兰/FA/FB Flange



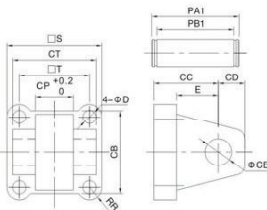
型号/内径 Symbol/Bore	32	40	50	63	80	100
BA	30.3	35.3	40.3	45.3	45.3	55.3
BB	10	10	12	12	16	16
BC	45	52	65	76	94	112
BD	32	36	45	50	63	75
BE	80	90	110	120	150	175
BF	64	72	90	100	126	150
BH	6.5	6.5	8.5	8.5	10.5	10.5
AJ	10.5	10.5	13.5	13.5	16.5	16.5
AK	6.5	6.5	8.5	8.5	10.5	10.5
BP	7	9	9	9	12	14
T	32.5	38	46.5	56.5	72	89

CA单耳环/ CA Single Earring



型号/内径 Symbol/Bore	32	40	50	63	80	100
S	45	52	65	76	94	112
T	32.5	38	46.5	56.5	72	89
RR	6.5	6.5	9	9.5	11	11.5
DB	34	41	54	65	83	101
DC	22	25	27	32	36	41
DD	10	11	13	16	16	20
DE	14	17	17	22	24	25
DQ	26	28	32	40	50	60
D	6.5	6.5	8.5	8.5	10.5	10.5
E	10	12	12	16	16	20

CB双耳环/ CB Double Earring



型号/内径 Symbol/Bore	32	40	50	63	80	100
S	45	52	65	76	94	112
T	32.5	38	46.5	56.5	72	89
D	6.5	6.5	8.5	8.5	10.5	10.5
E	14	17	17	22	24	25
RR	6.5	6.5	9	9.5	11	11.5
CB	34	41	54	65	83	101
CC	22	25	27	32	36	41
CD	10	11	13	16	16	20
CE	10	12	12	16	16	20
CP	26	28	32	40	50	60
CT	45	52	60	70	90	110
PA1	53	60	68	78	100	120
PB1	46.5	53.5	61.5	71.5	91.5	111.5

订购代号/Ordering Code

SDA 25 X 50 - 25 - S - B

型号/Type	缸径 Cylinder Bore	行程 Stroke	SDAJ:可调行程 Adjustable stroke Type	磁石代号 Magnet Code	牙型/Cog Type
SDA:复动型 Double Action				空白:不附磁石 Blank:Internal Thread	空白:内螺纹 Blank:Internal Thread
SSA:单动伸出型 Single Action Extrusion Type				S:附磁石 Attach Magnet	B:外螺纹 External Thread
STA:单动引入型 Single Action Drawing-in Type					N:无螺纹 No Thread
SDAD:双轴型 Double-shaft Type					
SDAJ:双轴可调型 Double-shaft and Adjust Able Stroke Type					



SDA40×15



SSA40×20



SDAJ40×25-5

规格/Specification

内径/Bore (mm)	12	16	20	25	32	40	50	63	80	100
动作形式/Motion Pattern	复动型/Double Action									
工作介质/Working Medium	空气/Air									
使用压力范围 Operating Voltage Range	基本型/Basic Type FA型/Type I B型/Type SDB型/Type									
保证耐压力/Ensured Pressure Resistance	13.5Kgf/cm ²									
使用温度范围/Operating Temperature Range	0-70℃									
使用速度范围/Operating Speed Range	30-500									
接管口径/Joint Pipe Bore	M5×0.8									

行程/Stroke

内径/(mm)Bore	12	16	20	25	32	40	50	63	80	100
复动型 Double Action	不附磁 Not attach magnet	5-60mm 每5mm-级/Every 5mm is grouped as one grade	5-85mm 每5mm-级/Every 5mm is grouped as one grade	5-90mm 每5mm-级/Every 5mm is grouped as one grade	100-110mm 每5mm-级/Every 5mm is grouped as one grade	5-90mm 每5mm-级/Every 5mm is grouped as one grade	5-90mm 每5mm-级/Every 5mm is grouped as one grade	100-130mm 每5mm-级/Every 5mm is grouped as one grade	100-120mm 每5mm-级/Every 5mm is grouped as one grade	100-130mm 每5mm-级/Every 5mm is grouped as one grade
单动型 Single Action	附磁型 Attach magnet	5-50mm 每5mm-级/Every 5mm is grouped as one grade	5-75mm 每5mm-级/Every 5mm is grouped as one grade	5-90mm 每5mm-级/Every 5mm is grouped as one grade	100mm	5-90mm 每5mm-级/Every 5mm is grouped as one grade	5-90mm 每5mm-级/Every 5mm is grouped as one grade	100-120mm 每5mm-级/Every 5mm is grouped as one grade	100-120mm 每5mm-级/Every 5mm is grouped as one grade	100-130mm 每5mm-级/Every 5mm is grouped as one grade
最大行程/Max.Stroke	60mm		100mm		120mm			130mm		