

# LAC系列组合元件(三联件)

LAC Series Combination(LAF.LAR.LAL Combination)



## 订购代号/Ordering Code

**LAC 3000 - 03 D**

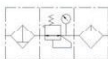
空气组合元件  
Air Combination

规格  
Specification  
2000  
2500  
3000  
4000  
5000

连接口径  
Joint Pipe Bore  
01:G1/8"  
02:G1/4"  
03:G3/8"  
04:G1/2"  
06:G3/4"  
10:G1"

排水方式/Drian Type  
空白:差压排水  
Blank:Differential Drain  
D:自动排水  
D:Automatic Drain

## 图形符号/Graphic symbol



LAC4000-04



LAC2000-02

## 规格/Specification

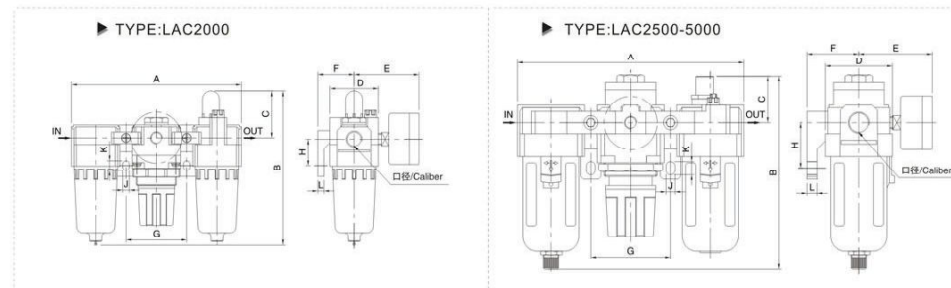
型号/Model	LAC2000-01	LAC2000-02	LAC2500-02	LAC2500-03	LAC3000-02	LAC3000-03	LAC4000-03	LAC4000-04	LAC4000-06	LAC5000-06	LAC5000-10
额定流量/Rated Flow	500	500	1500	1500	2000	2000	4000	4000	4500	5000	5000
接管口径/Joint Pipe Bore	G1/8	G1/4	G1/4	G3/8	G1/4	G3/8	G3/8	G1/2	G3/4	G3/4	G1
滤芯精度/Filtering Element Toughness	25 μ										
最高使用压力/Highest Working Pressure	1.0MPa										
保证耐压/Ensured Pressure Resistance	1.5MPa										
使用温度范围/Operating Temperature Range	5~60℃										
调压范围/Range of Adjustable Pressure	0.05~0.85MPa										
建议用油/Recommended Oil Use	ISOVG 32										
容器材料/Container Material	聚碳酸酯/Polycarbonate										
保护罩/Protective Cover	无/Not Available					有/Available					
放水功能/Drain Function	差压放水/Differential Drain					差压放水、自动放水/Differential Drain, Automatic Drain					
阀型/Valve Type	带溢流型/With Overflow										
过滤器/Filter	LAF2000-01	LAF2000-02	LAF3000-02	LAF3000-03	LAF3000-02	LAF3000-03	LAF4000-03	LAF4000-04	LAF4000-06	LAF5000-06	LAF5000-10
调压器/Regulator	LAR2000-01	LAR2000-02	LAR2500-02	LAR2500-03	LAR3000-02	LAR3000-03	LAR4000-03	LAR4000-04	LAR4000-06	LAR5000-06	LAR5000-10
油雾器/Lubricator	LAL2000-01	LAL2000-02	LAL3000-02	LAL3000-03	LAL3000-02	LAL3000-03	LAL4000-03	LAL4000-04	LAL4000-06	LAL5000-06	LAL5000-10



# LAC系列组合元件(三联件)

LAC Series Combination(LAF.LAR.LAL Combination)

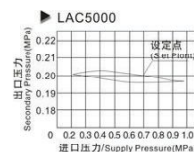
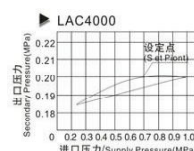
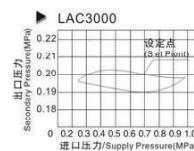
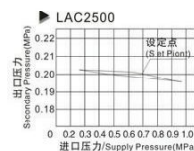
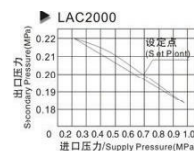
## 外形尺寸/Overall Dimension



型号/Model	口径/Bore	A	B	C	D	E	F	G	H	J	K	L
LAC2000	1/4	140	125	38	40	56.8	30	50	24	5.5	8.5	5
LAC2500	1/4•3/8	181	156.5	38	53	60.8	41	64	35	7	11	7
LAC3000	1/4•3/8	181	156.5	38	53	60.8	41	64	35	7	11	7
LAC4000	3/8•1/2	238	191.5	41	70	65.5	50	84	40	9	13	7
LAC4000-06	3/4	253	193	40.5	70	69.5	50	89	40	9	13	7
LAC5000	3/4•1	300	271.5	48	90	75.5	70	105	50	12	16	10

## 压力特性/Pressure Character

进口压力=0.7MPa出口压力=0.2MPa流量=20L/min  
Supply Pressure=0.7MPa Secondary Pressure=0.2MPa Flow=20L/min



## 流量特性/Flowing Character

进口压力=0.7MPa  
Supply Pressure=0.7MPa

