



Pneumatic Direction Control Solenoid Valve Manifolds and Accessories



AM Series Manifolds

| Pneumatic Directional Control Solenoid Valve Series Accessories | | | |
|---|-------|--|--------------|
| Part No. | Price | Description | Weight (lbs) |
| AM-522 | <---> | NITRA pneumatic valve manifold, 5-port (4-way), 2-station, for use with AVS-52 series directional control valves. Valve mounting screws and gaskets included. | 0.5 |
| AM-524 | <---> | NITRA pneumatic valve manifold, 5-port (4-way), 4-station, for use with AVS-52 series directional control valves. Valve mounting screws and gaskets included. | 0.9 |
| AM-526 | <---> | NITRA pneumatic valve manifold, 5-port (4-way), 6-station, for use with AVS-52 series directional control valves. Valve mounting screws and gaskets included. | 1.2 |
| AM-528 | <---> | NITRA pneumatic valve manifold, 5-port (4-way), 8-station, for use with AVS-52 series directional control valves. Valve mounting screws and gaskets included. | 1.5 |
| AM-52BP | <---> | NITRA pneumatic blanking plate for use with AM-52 series manifolds. Mounting screws provided. | 0.1 |
| AM-532 | <---> | NITRA pneumatic valve manifold, 5-port (4-way), 2-station, for use with AVS-53 series directional control valves. Valve mounting screws and gaskets included. | 0.8 |
| AM-534 | <---> | NITRA pneumatic valve manifold, 5-port (4-way), 4-station, for use with AVS-53 series directional control valves. Valve mounting screws and gaskets included. | 1.4 |
| AM-536 | <---> | NITRA pneumatic valve manifold, 5-port (4-way), 6-station, for use with AVS-53 series directional control valves. Valve mounting screws and gaskets included. | 1.9 |
| AM-538 | <---> | NITRA pneumatic valve manifold, 5-port (4-way), 8-station, for use with AVS-53 series directional control valves. Valve mounting screws and gaskets included. | 2.5 |
| AM-53BP | <---> | NITRA pneumatic blanking plate for use with AM-53 series manifolds. Mounting screws provided. | 0.1 |
| AVP-31BKT | <---> | NITRA pneumatic individual mounting bracket for use with AVP-31 series directional control valves. | 0.1 |
| AVP-31KIT | <---> | NITRA (tm) pneumatic stacking screw kit for use with AVP-31 directional control valves. One kit is required for each additional AVP-31 valve added to the stack. | 0.1 |



AM-52BP

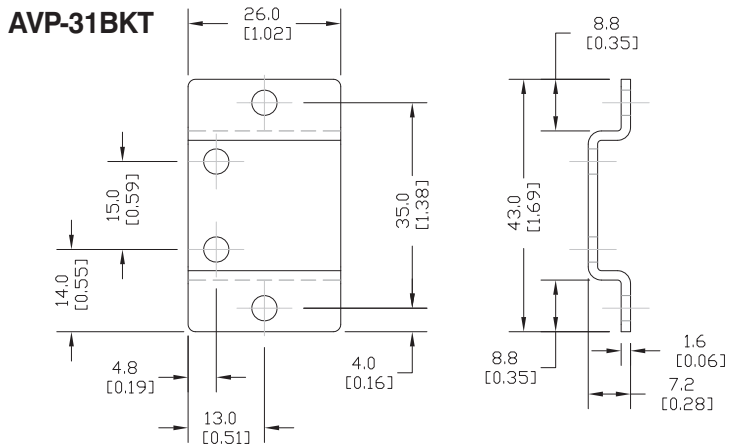


AVP-31BKT

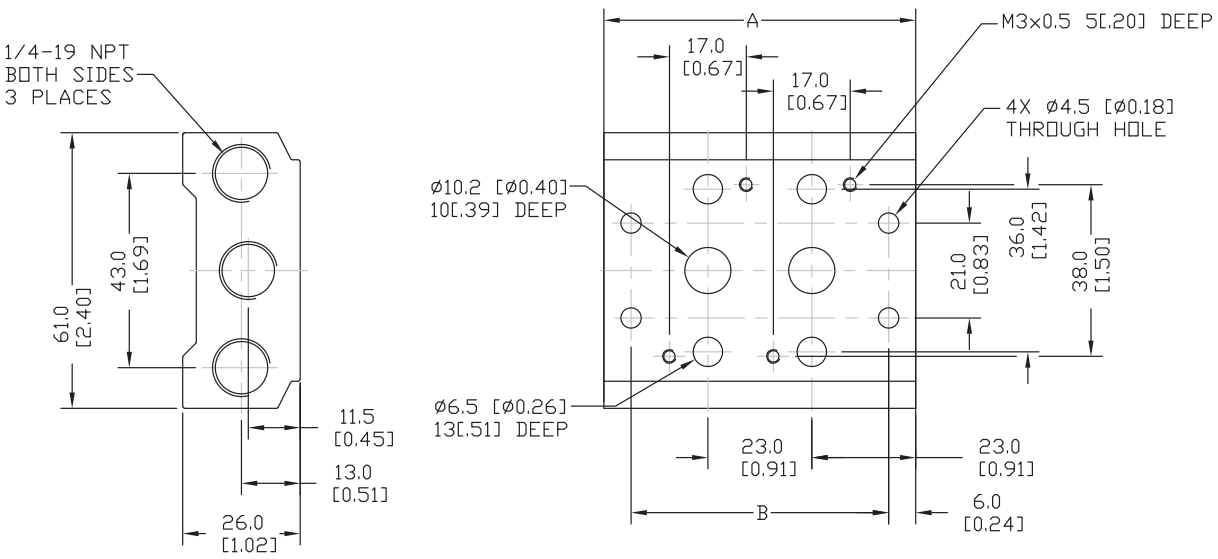


AVP-31KIT

Dimensions



AM 52 Series Manifolds



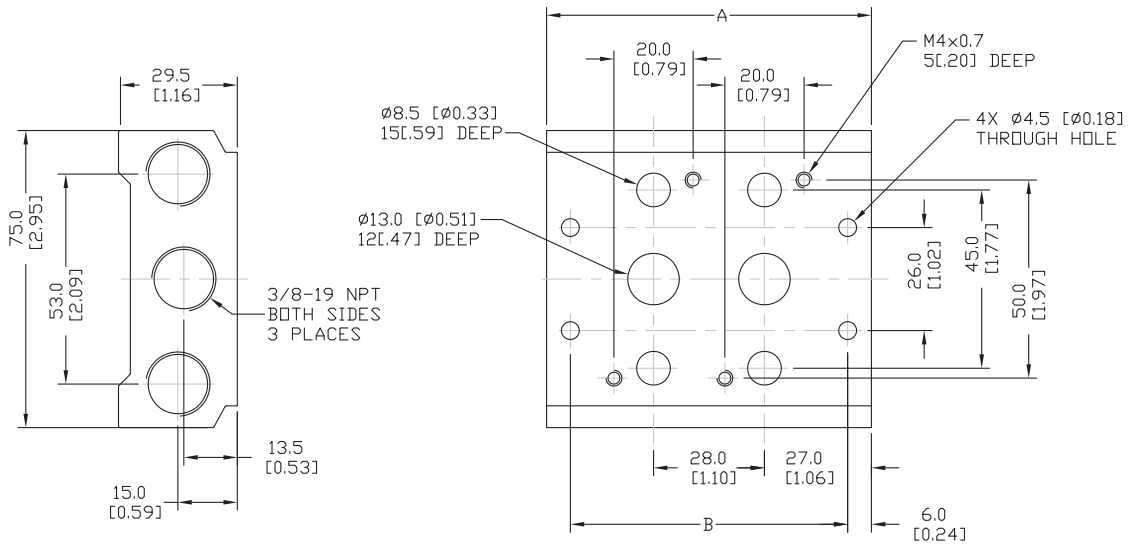
| MANIFOLD | A | B |
|----------|----------|----------|
| AM-522 | 69[2.7] | 57[2.2] |
| AM-524 | 115[4.5] | 103[4.1] |
| AM-526 | 161[6.3] | 149[5.9] |
| AM-528 | 207[8.1] | 195[7.7] |

Dimensions in mm [inches]



Pneumatic Direction Control Solenoid Valve Manifolds and Accessories

AM 53 Series Manifolds



| MANIFOLD | A | B |
|----------|----------|----------|
| AM-532 | 82[3.2] | 70[2.8] |
| AM-534 | 138[5.4] | 126[5.0] |
| AM-536 | 194[7.6] | 182[7.2] |
| AM-538 | 250[9.8] | 238[9.4] |

Dimensions in mm [inches]