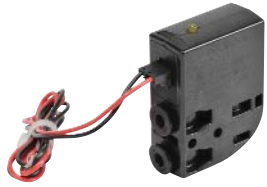


Pneumatic Directional Control Solenoid Valves – BVS Series



BVS Series Solenoid with Leads



BVS Series Solenoid with DIN 43650 Form C

NITRA™ pneumatic BVS series modular solenoid valves are body ported 3-port (3-way) poppet valves available in 2-position, normally open or normally closed configurations. Most models have removable flying leads that can be used with BVM series manifolds. Two models are available with an 8 mm Micro DIN connector. Units are only DIN rail mountable when used with BVM series manifolds.

Features

- Body ported, 3-port (3-way) poppet valves
- 5/32" (4 mm) push-to-connect ports
- Flow coefficients (Cv) from 0.02 to 0.05
- 2-position, single solenoid spring return
- Normally open or normally closed
- 12 VDC, 24 VDC or 120 VAC solenoid coils with LED status indication & surge suppression diode
- Flying leads or 8 mm DIN connection
- Pushbutton manual operator
- 2-year warranty

Valve Symbols

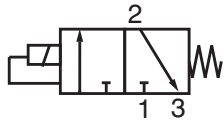


Diagram A 3/2 NC

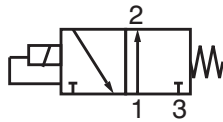
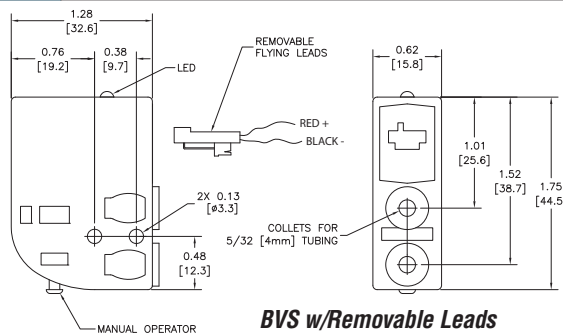


Diagram B 3/2 NO

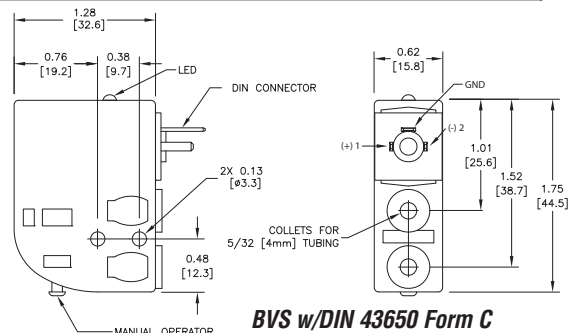
BVS (3-port, 2-position) Series Specifications								
Model	BVS-32C1-12D	BVS-32A1-24D	BVS-32C1-24D	BVS-32C1-120A	BVS-32C2-12D	BVS-32C2-24D	BVS-33C1-12D	BVS-33C1-24D
Valve Type	Normally Closed	Normally Open	Normally Closed	Normally Closed	Normally Closed	Normally Closed	Normally Closed	Normally Closed
Acting	Direct Solenoid Poppet							
Diagram	A	B	A	A	A	A	A	A
Port Size	5/32" (4 mm) Push-to-Connect							
Orifice Size	0.9 mm (Cv=0.02)						1.4 mm (Cv=0.05)	
Fluid	Air or Inert Gas (to be filtered by 40µ filter element)							
Min. / Max. Pressure	0 - max 120 psi (8.3 bar)	0 - max 90 psi (6.2 bar)	0 - max 120 psi (8.3 bar)				0 - max 30 psi (2.1 bar)	
Vacuum	28 in. Hg							
Body	Glass Reinforced Thermoplastic							
Voltage	12 VDC	24 VDC	24 VDC	120 VAC	12 VDC	24 VDC	12 VDC	24 VDC
Inrush Power	1.6 W	1.4 W	1.4 W	1.7 W	1.6 W	1.4 W	1.6 W	1.4 W
Continuous ON Power	1.3 W	1.2 W	1.2 W	1.5 W	1.3 W	1.2 W	1.3 W	1.2 W
Expected Life	50,000,000 cycles at max 3 cycles/second	10,000,000 cycles at max 3 cycles/second	50,000,000 cycles at max 3 cycles/second					
Wiring	Removable 18" Flying Leads				DIN 43650 Form C		Removable 18" Flying Leads	
Response Time	0.01 sec							
Temperature - Operation and Storage	0-120°F (-18-49°C)							
Lubrication	Not Required							
Protection	n/a				IP 65		n/a	
Price	<--->	<--->	<--->	<--->	<--->	<--->	<--->	<--->
Weight (lbs)	0.1							

Valve Dimensions

Dimensions inches [mm]



BVS w/Removable Leads

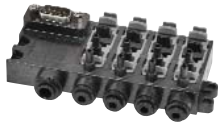


BVS w/DIN 43650 Form C



Manifolds for Modular Solenoid Valves

– BVM Series


BVM - 4-Station

BVM - 8-Station

NITRA™ pneumatic BVM series modular manifolds simplify the mounting and wiring of BVS series solenoid valves. Made of sturdy glass reinforced thermoplastic with DIN rail mounting clips included, they are available in 4- and 8-station models. Push-to-connect inlet and out connections and a 9-pin D-sub connector allow quick and easy tubing and wiring.

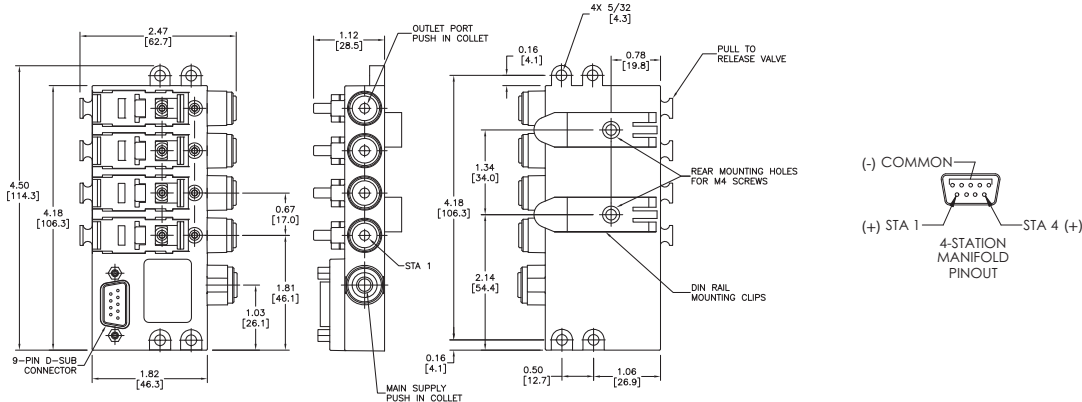
Features

- No tools required to install/remove valves
- 4- or 8-station manifolds available
- 6 mm or 1/4" tube inlets
- 35 mm DIN rail mounting clips included
- 9-pin D-sub connector for easy wiring
- 2-year warranty

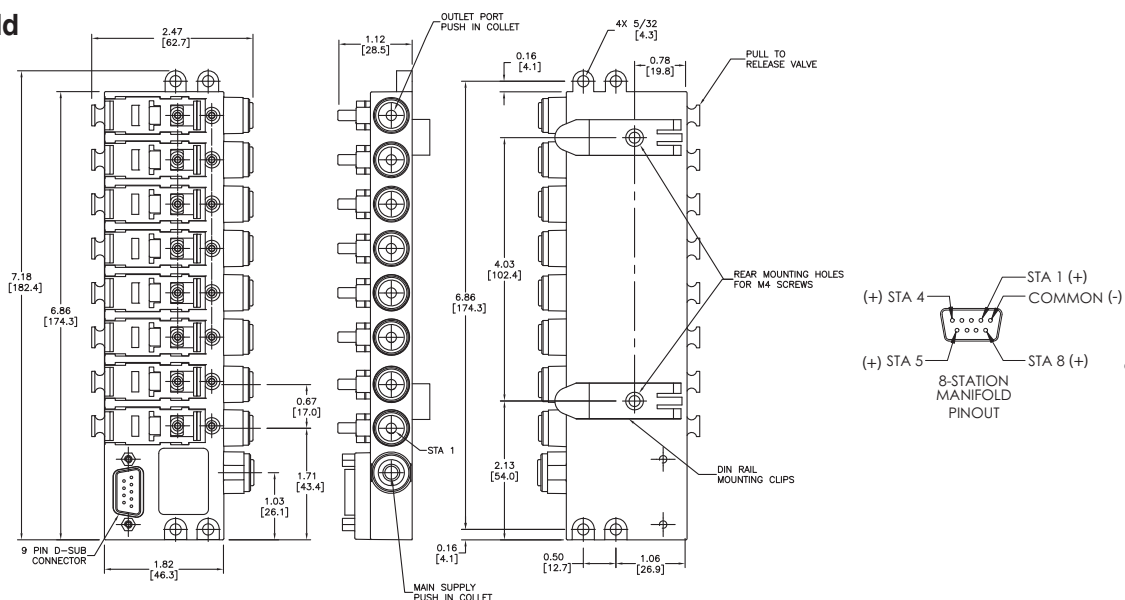
BVM Series Manifolds						
Part No.	Stations	Inlet	Outlet	Connection	Price	Weight (lbs)
BVM-3425	4	1/4"	5/32"	9-pin D-sub	<--->	0.3
BVM-346M	4	6 mm	4 mm		<--->	0.3
BVM-3825	8	1/4"	5/32"		<--->	0.5
BVM-386M	8	6 mm	4 mm		<--->	0.5

Dimensions inches [mm]

4-Station Manifold



8-Station Manifold



Pneumatic Directional Control Solenoid Valves – BVS Series - Accessories

Accessories

BVM Series Manifold Accessories			
Part No.	Description	Price	Weight (lbs)
BVM-3BP	Blanking plug, modular manifold	<--->	0.1
SC8-0	Pneumatic solenoid connector, 8mm micro per DIN 43650 Form "C". Field wired	<--->	0.1
SC8-1	Pneumatic solenoid connector, 8mm micro per DIN 43650 Form "C" with 1.0 meter (3.3 ft) molded pigtail cable	<--->	0.1
ZL-DB9F-CBL-2P	ZIPLink pigtail cable with 9-pin D-sub female connector, 28 AWG, 2.0 meter (6.6 ft) length	<--->	0.3
ZL-DB9F-CBL-5P	ZIPLink pigtail cable with 9-pin D-sub female connector, 28 AWG, 5.0 meter (16.4 ft) length	<--->	0.5



BVM-3BP



SC8-0

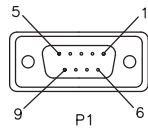


SC8-1



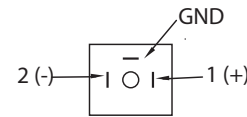
ZL-DB9F-CBL-xP

ZL-DB9F-CBL-xP Pinout



PIN OUT

P1	P2
1	BLACK
2	BROWN
3	RED
4	ORANGE
5	YELLOW
6	GREEN
7	BLUE
8	VIOLET
9	GREY



Wiring for DIN Connector



Above photo shows an assembled BVM Series manifold with BVS Series Solenoids and BVM blanking plug

Note: Manifold must have a BVS valve or BVM-3BP blanking plug installed in each station for proper operation.