

# Talking Automation

New to DirectAutomation?  
Or just want to get more familiar  
with our products and services?

Visit our website.  
<http://www.directautomation.com.au>

It's a quick start for information for newcomers to our company. From our site you can access our 24/7 online store, tech support site, and much, much more.... check it out.

## PROJECT IDEAS



*Easy ordering any way you want*

We do it your way —

Phone us

Fax or

Email us,

Shop online.

*Easy payment terms*

30 day trading account

We accept purchase orders, EFT and major credit cards.

Everyday low prices

**Call: 1800-633-040**

Automation

Communications

Process

Switchgear

Pneumatics

Our website is also a great resource for the most current pricing and new products:  
For the most up-to-date price lists or shop online visit:

**[www.directautomation.com.au](http://www.directautomation.com.au)**

Direct Automation makes your job easier  
You bought the products,  
you deserve FREE manuals . . .

. . . all our manuals, CAD drawings, and documentation are FREE downloads available 24/7.  
You paid hard earned money for our products. Why should you have to pay more for the manuals to use them?  
That doesn't make sense. If you're evaluating a product, download the manual to help you make a better choice - no purchase necessary.

**You need quality products at great prices  
from a solid supplier. . .**

# DirectAutomation

## Take a closer look at buying direct (You'll be in good company)

Direct Automation is a direct seller of automation and industrial control products such as PLCs, sensors, pushbuttons, AC drives/motors, enclosures, operator interfaces, pneumatics and much more. Through our free CD catalog and our full-featured website, we are able to offer the most practical industrial automation products at the industry's lowest prices.

Tens of thousands of owners and managers at large and small companies alike have turned to Direct Automation in the past several years because we offer over 9,500 industrial automation products for electrical control systems that won't break your budget.



### Looking for a common sense way to buy industrial controls?

# It's time to try DIRECTAUTOMATION

## Who are we

Direct Automation Pty Ltd is a privately held Australian company serving the Pacific and Asian region, we represent many great companies including AutomationDirect.com, Koyo, Facts Engineering, Kepware Technologies, EMA, Danfoss, Niplex, Lidding Pneumatics and more.

## Support

Our phone-based technical support is so good that most of our customers say they would recommend us to someone else! Are you tired of technical support staffs that are slow picking up the phone and then treat you with an attitude? Why not try our service?

Most of customers who have used our service claim that it's better than what they have been getting from other automation suppliers. Some say that we are above average to excellent in accuracy, above average to excellent in thoroughness, and that we are above average in response time, and rate us above average in attitude.

## About Us

Our list prices are often 50% below the list prices of other leading traditional suppliers. Why are our prices so low?

We are primarily a catalog/online automation company with incredibly efficient operations. We do not have hundreds of sales people who make personal sales calls, drive company cars, use company mobile phones and laptops, and require entertainment budgets. Instead, we send you a DVD catalog or ask you to try our online store, both of which are packed with super low everyday prices. It's that simple.

## Contact Us

Direct Automation Pty Ltd  
A.B.N 53 168 014 248 A.C.N 168 014 248  
79 Dover Drive Burleigh Heads  
Queensland, Australia 4220  
Tel: 61-7-5535 3217 Fax: 61-7-5535 7284  
Email: sales@directautomation.com.au

# DIRECTAUTOMATION

## This ".com.au" is powered by ".awesomepeople"

**Check us out for our prices,  
keep coming back for our service.**

For over twenty years our sole focus has been customer service.

That takes many forms: great prices, fast delivery, and quality products. But regardless of our product selection and other tangibles like pricing, the intangible value of customer service is something that cannot be faked, replaced by machinery or glossed over with a free lunch from a visiting sales rep.

Our team members here at DirectAutomation.com.au approach every day with this one goal in mind - serve the customer. It's a simple philosophy that many companies forget or make too complex and then fail at it. If the answer to any decision is "Yes, this is good for our customers", then we do it. **It's that simple.**

**"Should we have real upfront pricing online"**

Yes, this is good for our customers."

**"Should we have FREE tech support before, during, and after any sale instead of charging yearly fees for tech support?"**

Yes, this is good for our customers."

**"Should we offer FREE software on many products instead of charging licensing fees?"**

Yes, this is good for our customers."

**"Should we have all our documentation online for FREE so people can access anytime, even before they choose to purchase?"**

Yes, this is good for our customers."

**"Should we offer more selection by consistently introducing more new quality products with great prices monthly, sometimes weekly?"**

Yes, this is good for our customers."

**"Should we offer FREE firmware upgrades on many products instead of charging licensing fees?"**

Yes, this is good for our customers."

**"Should we be fiscally responsible and run an efficient business so customers can rely on us decade after decade after decade?"**

Yes, this is good for our customers."

All these are discussions we've had internally and all have had certain aspects of "can we do that?", "that will be hard to accomplish", "no one else is doing that, how can we?". But if you bring it back to the simple answer, "Yes, this is good for our customers", then the perceived obstacles really don't matter.

Our company has evolved dramatically since 1994 and it's this type of decision making by all our team members over the years that keeps our customers coming back and new customers checking us out daily.

If you're a current customer, we sincerely thank you for your business. We wouldn't be here if it wasn't for you and promise to do our best for you every day. If you're new and checking us out for the first time, we hope you give us an opportunity to serve you.

# www.directautomation.com.au

Direct Automation makes your job easier

# Shop at DirectAutomation anytime .....online!

Our online store is open all hours so you can shop when you want to at [www.directautomation.com.au](http://www.directautomation.com.au)

## Programmable Controller Summary

Those making the buying decisions for Programmable Controller applications can have very different needs. We offer a selection of controller families that can fit a variety of applications. Regardless if you are a newcomer to programmable controllers or if you

are a seasoned veteran; whether you need simple discrete control or if you need to calculate complex algorithms lightning fast, we have a controller family that is perfect for you.

Easy for new user

Basic machine control

Lowest cost

Simple analog

FREE Software

### CLICK: Our best value PLC

The CLICK PLC is becoming one of the industry's favorite control systems in the 142 I/O or less category.



#### Basic CPUs:

- 8 DC In / 6 DC Out (sinking)
- 8 DC In / 6 DC Out (sourcing)
- 8 DC In / 6 Relay Out
- 8 AC In / 6 Relay Out

#### Analog CPUs:

- 4 DC In / 4 DC Out (sinking), 2 Analog In, 2 Analog Out (current/voltage selectable)
- 4 DC In / 4 DC Out (sourcing), 2 Analog In, 2 Analog Out (current/voltage selectable)

#### Standard CPUs:

- 8 DC In / 6 DC Out (sinking)
- 8 DC In / 6 DC Out (sourcing)
- 8 DC In / 6 Relay Out
- 8 AC In / 6 Relay Out

- 4 DC In / 4 Relay Out, 2 Analog In, 2 Analog Out (current/voltage selectable)

- Built-in communication ports (two in Basic CPUs, three in Standard and Analog CPUs)
- Optional battery backup (Standard and Analog CPUs only)
- Real time clock/calendar (Standard and Analog CPUs only)
- Removable terminal blocks for easy wiring
- Stackable discrete and analog I/O option modules (DIN-rail or panel mountable)
- Program AND documentation stored in CPU
- Decimal memory addressing
- 21 easy-to-use instructions
- 8,000 steps of program memory

Fast CPU

CPU w/ built-in Ethernet

H2 works with most DL205 I/O modules. T1H works with most Terminator I/O.

Advanced discrete

Process control

Expandability

FREE Software

### Do-more H2 and T1H Series CPUs: Spend Less, Do More!



Do-more is a micro-modular PLC that leverages our most flexible I/O systems to create an incredibly powerful PLC at a fraction of the cost of comparable controllers.

- Cost effective hardware
- Documentation can be stored on board
- Built-in communications include USB programming, serial, and (optional) Ethernet
- Practical counting/pulse
- Ethernet-connected expansion I/O
- High-performance processors
- FREE programming software (with built-in simulator)
- Powerful control over program execution
- Enhanced troubleshooting tools
- FREE online training with coupon
- Starter kits available



Advanced discrete and process

Data collection

Extensive communication

Built-in data displays

Web Server

FREE Software

### Productivity Series: Premium features at a value price

The Productivity controllers shatter the price per feature paradigm in every category, with prices that can't be beat and a two-year warranty on all modules.



Productivity<sub>2000</sub>

EtherNet/IP



Productivity<sub>3000</sub>

- Auto discovery of hardware, including remote I/O bases (P3000 only) and GS drives when connected to the Ethernet remote I/O network
- Tag name database programming
- Task management
- Advanced "fill-in-the-blank" instructions
- Seamless corporate database connectivity
- Run-time editing and project transfer
- Project file, tag database and ladder documentation stored in the CPU
- FREE Productivity Suite software

Advanced discrete

Basic process control

Expandability

Ethernet

FREE Software\*

\*100-word program limitation, \$395 for unlimited program sizes

### DirectLOGIC: Long-running PLCs

DirectLOGIC PLCs (nano fixed I/O to modular units) are industry workhorses, time-tested in some of the toughest industrial settings.

All platforms use the same DirectSOFT programming software, so your investment is protected.



DirectLOGIC/Koyo

Six PLC platforms to choose from in the DirectLOGIC family:

- DL05 stand-alone brick with one option slot (30 I/O max)
- DL06 stand-alone brick with 4 option slots (100 I/O max)
- DL105 stand-alone brick with high amp relays (18 I/O max)
- DL205 powerful modular PLC with the most available option modules (up to 16,384 I/O max)
- DL305 time tested, legacy control platform (up to 368 I/O max)
- DL405 time tested, legacy control platform (up to 16,384 I/O max)



Automation

Communications

Process

Switchgear

Pneumatics

\*All prices are subject to change, orders are accepted at the pricing ruling at the time of acceptance of orders and do not include GST.

# Quality with Direct Automation's control components

## 30mm multi-layer Light Towers

High-luminance LEDs are used to enhance the extra brightness for 30mm light module, as well as extending their life, lower's the energy consumption, saves time and cost in maintenance.

A LED chip is installed on the PCB board by SMD technology. There are 8 lamps in each light module, providing extraordinary brightness. Voltage: 12-24V power supply.



## Fork Level switches



### Fork Level Switches

- No calibration necessary,
- Large vibrating range and the amplitude up to 8mm for the weak sticky materials hanging on the fork.
- Adjustable amplitude for distinguishing from the density of different substances.
- Ultra red LED offers a immediate warning for the operator to control the measurement.
- Suitable for measurement of level of liquid, particulate and dense materials.
- Available to detect solid substances in liquid.

## Paddle Level Switches



### Rotating Paddle Level Switches

The SRP/SRT Series are a modular design for rotating paddle level switches. Paddle level switches are divided into components: main part, coupling, extension rod for user lengths, and a selection of paddles.

- Special shaft sealing for dust-proof
- Stainless steel mechanical parts
- Rotating torque can be adjustable

The SRP/SRT Series are available in 24VAC, 110-120VAC, 220-240VAC or 24VDC.

**SRP10CC00504:** Standard type, L= 50mm (Shaft Material = SS 304), 80Deg C, standard, ABS housing **Everyday Price: \$125.00**

## Pressure Transmitters

The **PB series** electronic pressure transmitters sense gas, liquid and steam pressure and feature your choice of 0-10V or 4-20mA output.

The switch withstands aggressive media and detects pressure ranges up to 5800 psi (400 bar).



**PB1106** Pressure Sensors Sensing range 0-10 bar Analog output 0-10V 3-wire Thread connection: G1/4 **Everyday Price: \$139**

## Pneumatic Controls

### Pneumatic Tube and Fittings



### Mechanical Directional Valves 1/8, 1/4 and 1/2G Ports



### Automation

### Communications

### Process

### Switchgear

### Pneumatics

### S/S Mini Cylinder ISO6432 16mm to 40mm bores



MAC25X50-S.....25mm bore x 50mm stroke MA Series S/S Mini Cylinder Magnets & Cushion

**Everyday Price: \$46**

MAC40X100-S.... 40mm bore x 100mm stroke MA Series S/S Mini Cylinder Magnets & Cushion

**Everyday Price: \$72**

### LSF Series Cylinder ISO15552:2004



LSF50X100-S .....50mm bore x 100mm stroke Double Acting Sq Body Cyl ISO15552:2004 Magnet & Cushioning.

**Everyday Price: \$113**

LSF100X300-S .....100mm bore x 300mm stroke Double Acting Sq Body Cyl ISO15552:2004 Magnet & Cushioning

**Everyday Price: \$365**

### Directional Solenoid Valves M5 and 1/8 Ports



LDW251F10DC24V 5/2 Single Solenoid Valve M5 Port 24V DC complete with coils and plug top

**Everyday Price: \$49**

LDW251F11DC24V 5/2 Single Solenoid Valve 1/8 Port 24V DC complete with coils and plug top

**Everyday Price: \$49**

### Directional Solenoid Valves 1/4 and 1/2G Ports

LD25122DC24V 5/2 Single Solenoid Valve 1/4" Port 24V DC complete with coils and plug top

**Everyday Price: \$55**

LD25144-DC24V 5/2 Single Solenoid Valve 1/2" Port 24V DC complete with coils and plug top

**Everyday Price: \$125**

### Air Preparation Units



LAC2000-02

3 piece comb LAF,LAR,LAL Rated Flow L/min 500 1/4" Port

**Everyday Price: \$55**

# See things from a new Point of View

## HMI/SCADA Software for PC-based visualization



Point of View is powerful software for developing HMI, SCADA, and OEE/Dashboard projects for your control system that can be deployed anywhere.

Create graphical screens that are easily understood, plus show data, alarms, trends, and more. You get all this capability for a very practical price, no matter how small or large the system.

**Save time**  
View your process from your desk or Web-enabled mobile phone using a standard browser (Internet/intranet including XML support)

**Save money**  
Develop once and deploy on many Microsoft supported platforms

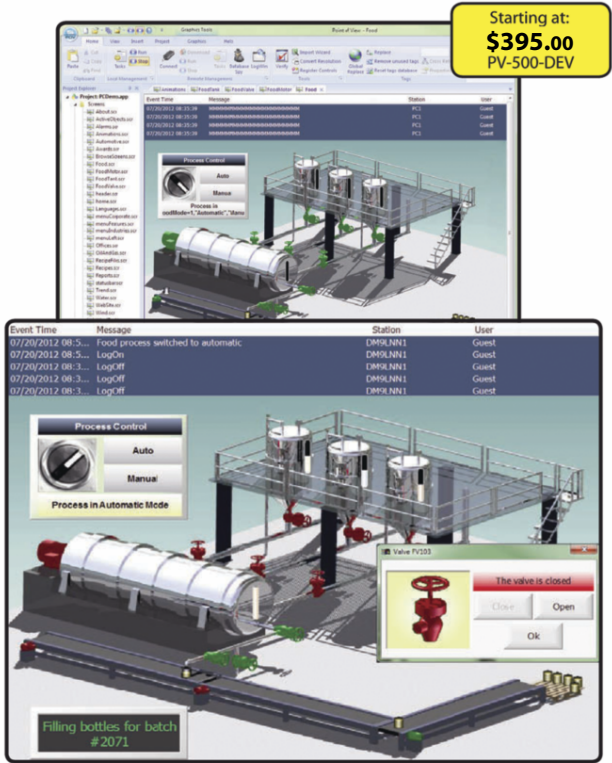
**Clear information**  
Multi-language (UNICODE) so operators understand immediately

**Fix problems fast**  
Understand alarms quickly, visually on-screen, or via E-mail, PDA, mobile phones or Web browsers

**Reduce downtime**  
Use open technologies (ActiveX, .NET) to visualize documentation, repair videos or audio messages

**Enterprise integration**  
Easily tie into ERP and "back-office" systems using built-in relational database connectivity

**Flexibility**  
Contains 18 built-in drivers for connection to the most popular industrial controllers: AutomationDirect's Productivity3000 and DirectLogic; plus many Allen-Bradley, Omron, Siemens, GE and Mitsubishi series. Also includes a driver for Modbus communication.



Intuitive software gives you the tools to create dynamic objects and screens, easily saved and re-used to speed development. If you need alarms, events, recipes, schedulers, database interface - it's all available!

Each Point of View package includes one thin client, one secure view thin client, and one mobile thin client license.

(Additional licenses are available separately.)

Three software packages are available in 500, 1000, and 5000 tag count versions:

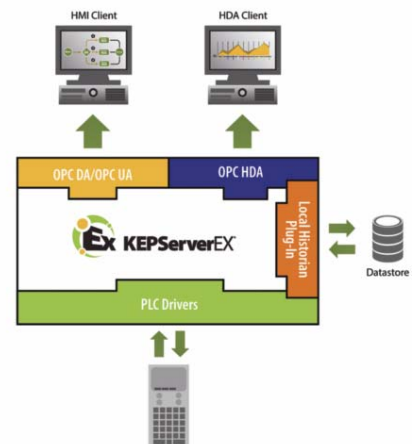
- Complete Package - Development + Runtime starting at: [PV-500]
- Development Package - Development Only starting at: [PV-500-DEV]
- Runtime Package - Runtime Only starting at: [PV-500-RT]

If your project gets bigger than expected, smaller versions can always be upgraded to the next larger tag count.

### Keypare

### Supported Protocol

- OPC HDA 1.20 client access



## Local Historian Plug-In for KEPServerEX

### KEPServerEX - Communications Platform



The Local Historian Plug-In for KEPServerEX moves data collection, storage, and access closer to the data source to prevent data loss and improve operational efficiency via open access and a single product solution. By plugging into the KEPServerEX communications platform, the Local Historian can connect to any device and add devices in real-time without operational downtime. Its plug-in architecture simplifies configuration, provides flexibility, and makes the information accessible across OPC HDA (an open standard).

# Quality power products at great prices



## Rhino PSS Series

### Power Supplies

- Universal input voltage, 85-264 VAC / 100-375 VDC
- 24 VDC or 12 VDC outputs, 35 to 100 Watts
- Dual Output Voltage Model - 24VDC (adjustable), 5VDC (fixed)
- Rugged aluminium housing
- Overload, overvoltage and thermal protection
- UL60950-1 recognized, CE marked



## Rhino PSB Series Power Supplies

- Universal input voltage, 85-264 VAC / 120-375 VDC single phase or 320-600 VAC 3-phase input
- 24 VDC or 48 VDC outputs, 15 to 480 Watts
- Overload, overvoltage and thermal protection
- (5) 24VDC output, single phase input models for Class 1, Div 2 hazardous locations
- (2) 48VDC output single phase input models
- 24VDC (adjustable), 40A (960W) output, 320-600 VAC 3-phase model
- Redundancy and buffer modules
- UL508 listed, UL60950-1 recognized, CSA certified, CE marked



## DC to DC Converters

DIN-rail and panel mount DC-to-DC converters

PSP series - wide input ranges of 9.5 to 18VDC and 18 to 75VDC for operation with all popular DC supply voltage systems. 5, 12 and 24 VDC adjustable output ranges.

FA-DCDC-1 - Isolated  $\pm 10$ VDC,  $\pm 5$ VDC multiple outputs. 12-24VDC input voltage range. Designed to handle many types of configuration applications.

## Full-Featured 3-Phase Soft Starters



### STELLAR® SR22 Series Compact 3-Phase Soft Starters

5A to 40A rated current versions @ 208-460V

45mm and 55mm standard sizes

SR22 semi-conductor solid state soft starters provide many advantages when used instead of electro-mechanical contactors to control 3-phase AC induction motors:

The SR22 series motor soft starters use thyristors for controlled reduced voltage motor starting and stopping

These low voltage soft starters then switch to internal contacts for efficient running at the rated speed

Compact AC motor soft starter prices start at \$190.00 (SR22-05)

## #1 Value in AC Drives

### AC Variable Drives

VFDs - Variable Frequency Drives (0.18 Kw to 75 Kw)



### GS1 AC Mini Drives

GS1 series - our most affordable and compact inverter

The GS1 series of AC drives offers V/ Hz control with advanced application features. These drives can be configured using the built-in digital keypad (which also allows you to set the drive speed, start and stop, and monitor specific parameters) or with the standard RS485 serial communications port

GS1-20P2 0.18kw 230v 1ph in, 3 ph out GS1 Drive Including controller and Manual

**Everyday Price: \$169**

## Motion Control Systems

### AC Servo Systems - Motors and Drives

SureServo: precise control of position, velocity and torque at an incredible price.



### SureServo® - AC Servo Systems

The SureServo family of brushless servo systems is fully digital and offers a rich set of features to cover a broad range of motion control applications. There are eight standard servo motors that can be operated in combination with one of three standard servo drives.

The SureServo family includes standard accessories such as: servo motor encoder cables, servo motor power/brake cables, ZIPLink kit for servo drive's CN1 connector that provides for easy connection of external controller and I/O, optional external regeneration resistors, and optional AC input filters.

SureServo servo drives start at **\$525.00**

# C-more Micro

## It's a touch panel... at a text panel price

### Do more with C-more Micro-Panels!

C-more Micro panels have become one of the most popular and most reliable value packed operator interfaces in the industrial market. After all, the low prices allow customers with tight budgets to take advantage of graphic control panel features that are most often found in more expensive touch screen products. The C-more Micro selection continues to expand as we now offer 3-inch, 4-inch, 6-inch, 8-inch and 10-inch panel sizes, in both monochrome and color models. With the addition of the larger 8-inch and 10-inch sizes, you can display even more text, graphics, or bitmaps to effectively communicate and display data to the operator. Touch and non-touch screen models are available in the 3-inch models.

Both TFT Color and STN Monochrome panels are now available. The 3-inch and 6-inch STN monochrome versions each offer five selectable background colors that allow you to use color to convey

meaning. Several options, including plug-and-play keypad bezels, are available for both the 3-inch and 6-inch models. The 4-inch 6-inch, 8-inch, and 10-inch TFT full color versions offer up to 32,767 colors for more vibrant and colorful project screens.

Prices Starting at **\$345**

4" TFT model Starting at **\$595**



C-more Micro Panel Selection Guide			
Feature	3-inch STN Monochrome Models	4-inch and 6-inch TFT Color Models	8-inch and 10-inch TFT Color Models
<b>Display Resolution &amp; Type</b>	128 x 64, touch or non-touch	320 x 240, touch	800 x 600, touch
<b>Ports</b>	1 serial (RJ12) and Optional DSUB15	1 USB (Port 1: USB Type B) 1 Serial (Port 2: DSUB15)	1 USB (Port 1: USB Type B) 2 Serial (RJ12 and DSUB15)
<b>User Project Memory</b>	768KB	3.2MB	30MB
<b>Portrait Mode</b>	NO	YES	YES
<b>Colors</b>	Monochrome; backlight can be configured per screen and/or per alarm as: red, green, amber, lime, or yellow (standard); or red, white or three shades of pink (high-contrast)	32,768 colors	32,768 colors



## FREE Configuration Software!

C-more Micro Programming Software is based on its powerful sibling, the C-more Touch Panel. It offers high end features designed to reduce your configuration time. Simply drag and drop the objects from the Object list (right side of screen) on to the screen construction area. Then configure your PLC tags and

assign them to the objects. Use the built-in simulator to review your work on your PC before ever downloading your project! The time saving benefits of the C-more Micro configuration software could easily pay for the panel.

### Built-in project simulator

- Runs your project on your PC
- Test all of your screens before downloading
- Time savings pays for the panel!

### Built-in user object/screen libraries

Save time by re-using your custom objects and screens.



Let Direct Automation help  
 you stretch your controls  
 and maintenance budget!



1-800-633-040 | [www.directautomation.com.au](http://www.directautomation.com.au)

