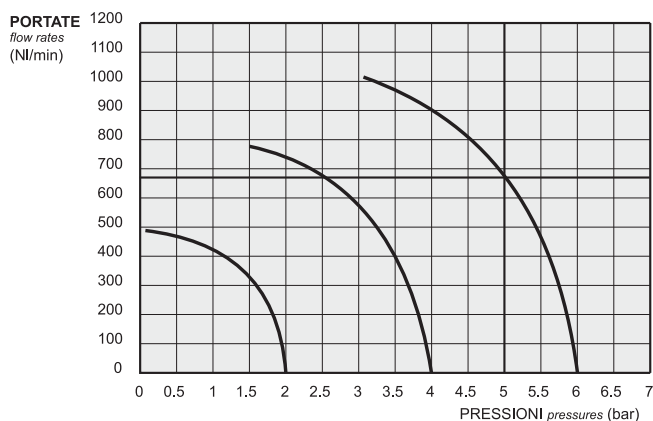


valvole a pedale

pedal valves



- Valvola a spola 5/2 - utilizzo come 3/2 o 2/2 tappando le altre connessioni
5/2 spool valve - it can be used as 3/2 or 2/2 by plugging the unused ports
- Attacchi filettati G1/4" sul corpo (raggruppati posteriormente)
G1/4" threaded ports
- Con o senza protezione (colore: giallo)
With or without yellow protection cover
- Monostabile e bistabile
Mono-stable and bi-stable
- Versione con microvalvola a 3 vie
Version with three way microvalve



Materiali

Corpo: alluminio 11S

Molle: INOX

Guarnizioni: NBR

Spola: alluminio nichelato

Parti interne: ottone OT58

Protezione: materiale plastico antiurto

Materials

Body: aluminium 11S

Spring: stainless steel

Seals: NBR

Spool: nickel plated aluminium

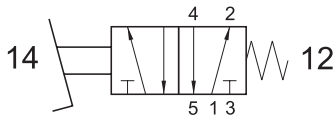
Internal parts: brass OT58

Protection cover: shock resistant plastic material

Diametro nominale <i>Nominal orifice</i>	7.5 mm
Attacchi <i>Ports</i>	G1/4"
Temperatura di esercizio <i>Temperature range</i>	max +60°C
Pressione di esercizio <i>Working pressure</i>	2 ... 10 bar 0.2 ... 1 MPa
Fluido <i>Fluid</i>	Aria filtrata 50µ con o senza lubrificazione <i>50µ filtered, lubricated or non lubricated air</i>

valvole a pedale

pedal valves



MONOSTABILE (mono-stable)

con protezione
with protection cover

senza protezione
without protection cover

PED 502 M

PEDS 502 M

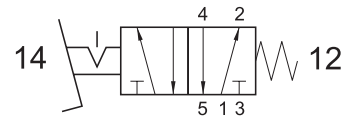
PED 502 S

CON FERMO DI SICUREZZA

Per azionare la valvola è necessario premere a fondo sul pedale, evitando così azionamenti accidentali.

WITH SAFETY FEATURE

To avoid accidental operation the pedal must be fully depressed.



BISTABILE (bi-stable)

con protezione
with protection cover

senza protezione
without protection cover

PED 502 B

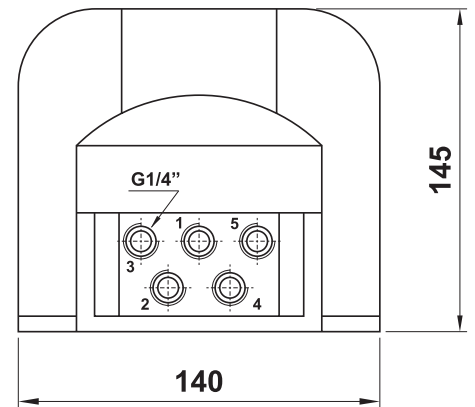
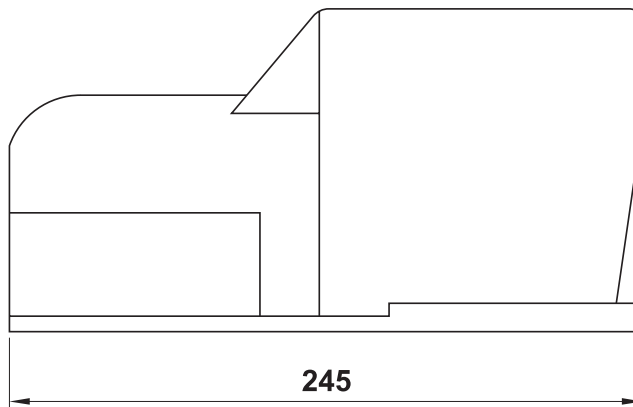
PEDS 502 B



PED 502 M

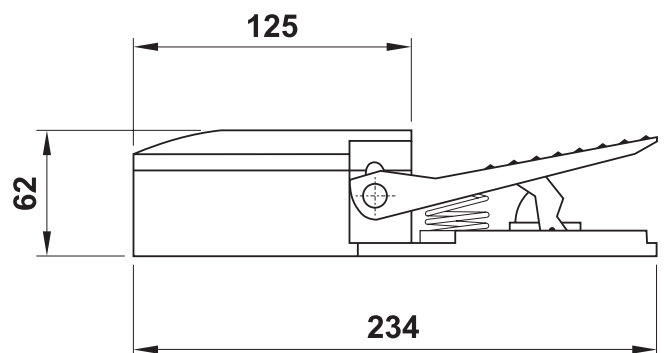
PED 502 S

PED 502 B



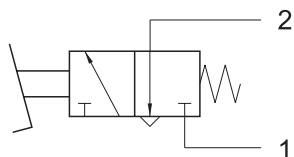
PEDS 502 M

PEDS 502 B



valvole a pedale

pedal valves



MONOSTABILE (mono-stable)

con microvalvola 3/2 NC e protezione
with 3/2 NC microvalve and protection cover

08.197.4

08.207.4

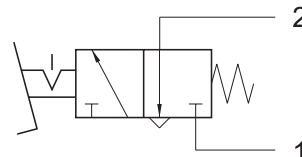
CON FERMO DI SICUREZZA

Per azionare la valvola è necessario premere a fondo sul pedale, evitando così azionamenti accidentali.

WITH SAFETY FEATURE

To avoid accidental operation the pedal must be fully depressed.

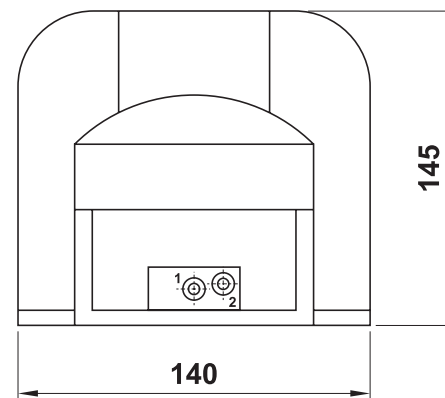
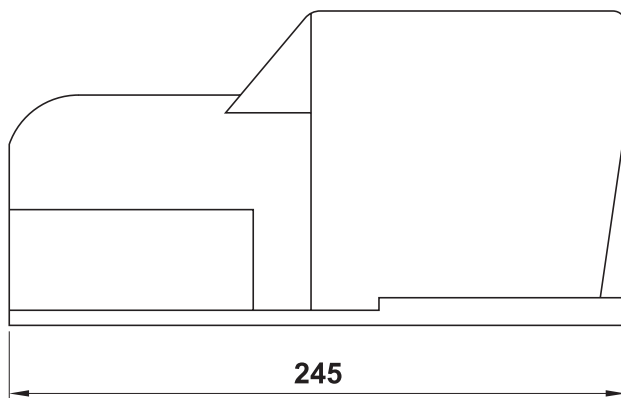
Attacchi Ports	automatici per tubo $\varnothing 4$ $\varnothing 4$ push-in
Portata nominale a 6 bar Nominal flow rate at 6 bar	100 NI/min



BISTABILE (bi-stable)

con microvalvola 3/2 NC e protezione
with 3/2 NC microvalve and protection cover

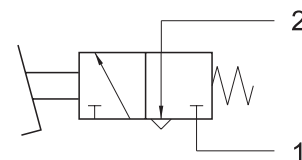
08.198.4



monostabile con microvalvola 3/2 NC mono-stable with 3/2 NC microvalve

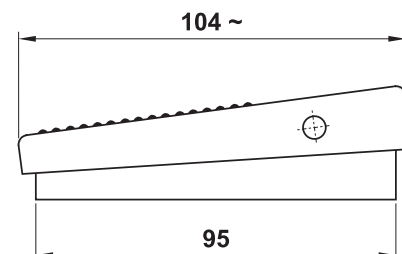
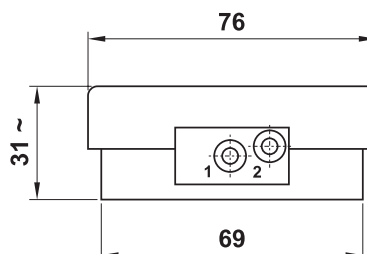
**CODICE DI ORDINAZIONE
ORDER CODE**

PED 304 M



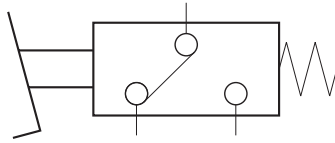
Involucro: materiale plastico antiurto
Pedal body: shock resistant plastic material

Attacchi Ports	automatici per tubo $\varnothing 4$ $\varnothing 4$ push-in
Portata nominale a 6 bar Nominal flow rate at 6 bar	100 NI/min



valvole a pedale

pedal valves



MONOSTABILE (mono-stable)

contatti NC-NA; con coperchio di protezione
NC-NO electric contacts; with protection cover

01.087.0

01.088.0

CON FERMO DI SICUREZZA

Per azionare la valvola è necessario premere a fondo sul pedale, evitando così azionamenti accidentali.

WITH SAFETY FEATURE

To avoid accidental operation the pedal must be fully depressed.

PEDALE CON CONTATTO ELETTRICO

pedal with electric contact



Durata (cicli) <i>Life time (cycles)</i>	10.000.000
Resistenza contatto <i>Contact resistance</i>	25 mΩ
Grado di protezione elettrica <i>Electrical protection degree</i>	IP 54
Contatti <i>Contacts</i>	1 NA + 1 NC scatto rapido <i>1 NO + 1 NC rapid switch</i>

potenza di impiego secondo IEC 337-1

utilization power, according to IEC 337-1

DC			AC				
V	24	220	V	24	220	380	500
A	6	0.1	A	10	10	8	6

