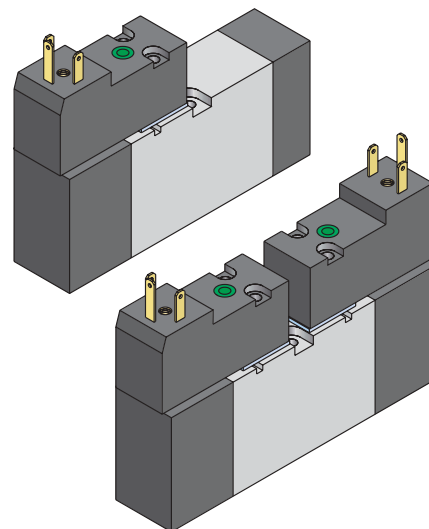


valvole VDMA 18 mm azion. elettropneumatico

solenoid actuated valves - VDMA 18 mm



- Valvole a spola 5/2-5/3
5/2-5/3 spool valves
- A norma VDMA 24563 - taglia 02 (18 mm)
Compliant to norm VDMA 24563 - size 02 (18 mm)
- Montaggio su basi modulari o a posti fissi
Installation on multiple sub-bases or manifolds
- Azionamento elettropneumatico monostabile o bistabile
Mono-stable or bi-stable solenoid pilot
- Elettropilota 15 mm basso assorbimento (2W) a norma DIN 43650, forma C
15 mm low consumption solenoid pilot (2W), compliant to norm DIN 43650, C form
- Azionatore manuale monostabile sull'elettropilota
Non-detented manual override on the solenoid pilot



1

I prodotti di seguito indicati sono venduti con elettropilota/i montato/i (per i dati tecnici vedi pag. 102).
The following listed products are sold with mounted solenoid pilot(s); for technical data see page 102.

Tempi di risposta - *response times*

| | |
|-----------------------------------|------------------------------------|
| monostabile <i>mono-stable</i> | TRA (14): 13 ms TRR (12): 26 ms |
| bistabile <i>bi-stable</i> | TRA (14): 24 ms TRR (12): 24 ms |

Materiali

Corpo: alluminio 11S
Molle: INOX
Guarnizioni: NBR
Spola: alluminio nichelato
Parti interne: ottone OT58

Materials

*Body: aluminium 11S
Springs: stainless steel
Seals: NBR
Spool: nickel plated aluminium
Internal parts: brass OT58*

| | | | |
|--------------------------------------------------------------------------------------------------------------|------------------------------------------------------------|-------------------------------------------------------------------------------------------------------|-----------------------------------------------|
| Diametro nominale <i>Nominal orifice</i> | | 5 mm | |
| Portata nominale a 6 bar, 8p 1 bar <i>Nominal flow rate at 6 bar, 8p 1 bar</i> | | 550 NI/min | |
| Temperatura di esercizio <i>Temperature range</i> | | max +60°C | |
| Pressione di esercizio <i>Working pressure</i> | al. interna monost. [<i>monost. internal air supply</i>] | al. interna bist. [<i>bi-stable internal air supply</i>] | alim. separata [<i>separate air supply</i>] |
| | 2.5 ... 10 bar 0.25 ... 1 MPa | 1 ... 10 bar 0.1 ... 1 MPa | max 10 bar max 1 MPa |
| Pressione di azionamento (per alimentazione separata) <i>Actuating pressure (for separate air supply)</i> | | monostabile [<i>mono-stable</i>] | bistabile [<i>bi-stable</i>] |
| | | 2.5 ... 10 bar 0.25 ... 1 MPa | 1 ... 10 bar 0.1 ... 1 MPa |
| Fluido <i>Fluid</i> | | Aria filtrata 50µ con o senza lubrificazione <i>50µ filtered, lubricated or non lubricated air</i> | |

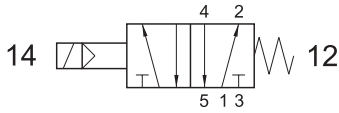
valvole VDMA 18 mm azion. elettropneumatico

solenoid actuated valves - VDMA 18 mm



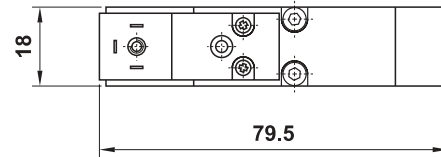
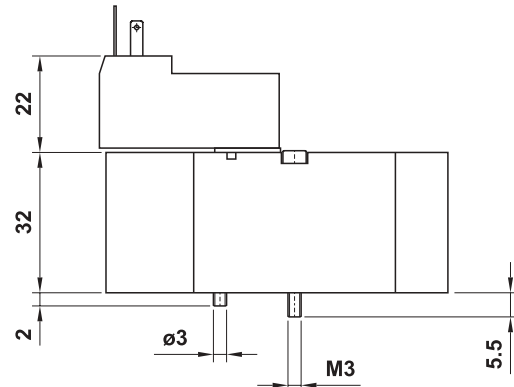
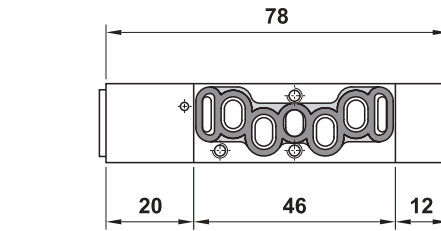
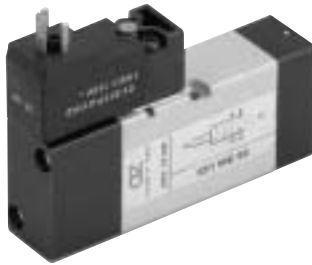
851 ME xx

5/2 comando elettrico - ritorno a molla
5/2 solenoid pilot - spring return



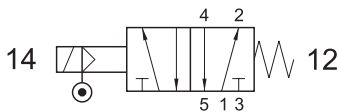
Nella sigla del prodotto sostituire le lettere "xx" con l'indicazione della tensione.
In the part number replace "xx" with the reference of the solenoid tension.

| | |
|--------------|----|
| 12V DC | 00 |
| 24V DC | 01 |
| 24V 50/60Hz | 02 |
| 110V 50/60Hz | 03 |
| 220V 50/60Hz | 04 |



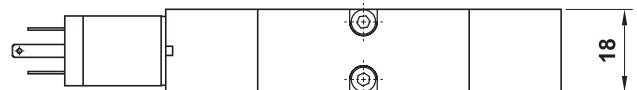
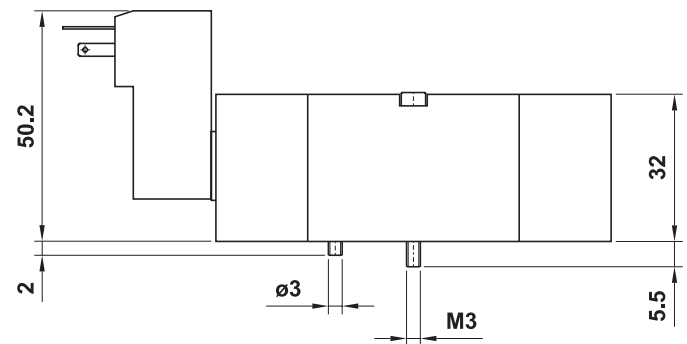
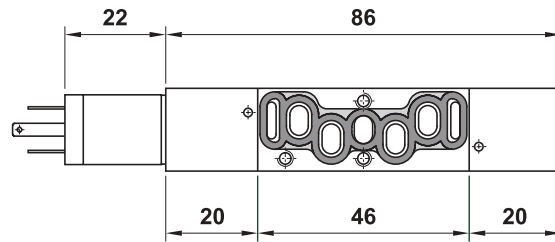
851 ME AS xx

5/2 comando elettrico alimentazione separata - ritorno a molla
5/2 solenoid pilot with separate air supply - spring return



Nella sigla del prodotto sostituire le lettere "xx" con l'indicazione della tensione.
In the part number replace "xx" with the reference of the solenoid tension.

| | |
|--------------|----|
| 12V DC | 00 |
| 24V DC | 01 |
| 24V 50/60Hz | 02 |
| 110V 50/60Hz | 03 |
| 220V 50/60Hz | 04 |



valvole VDMA 18 mm azion. elettropneumatico

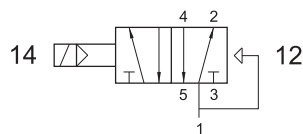
solenoid actuated valves - VDMA 18 mm



851 EFP xx

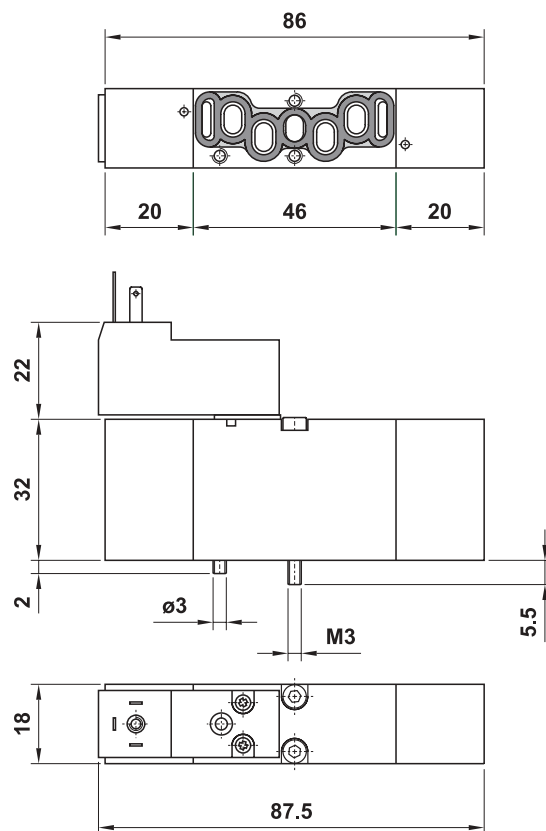
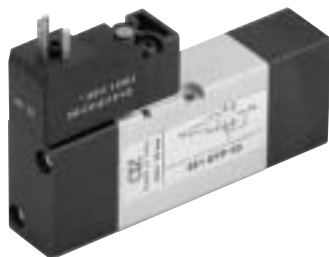
5/2 comando elettrico - ritorno a molla pneumatica

5/2 solenoid pilot - pneumatic spring return



Nella sigla del prodotto sostituire le lettere "xx" con l'indicazione della tensione.
In the part number replace "xx" with the reference of the solenoid tension.

| | |
|--------------|----|
| 12V DC | 00 |
| 24V DC | 01 |
| 24V 50/60Hz | 02 |
| 110V 50/60Hz | 03 |
| 220V 50/60Hz | 04 |



1

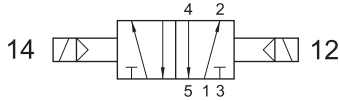
valvole VDMA 18 mm azion. elettropneumatico

solenoid actuated valves - VDMA 18 mm



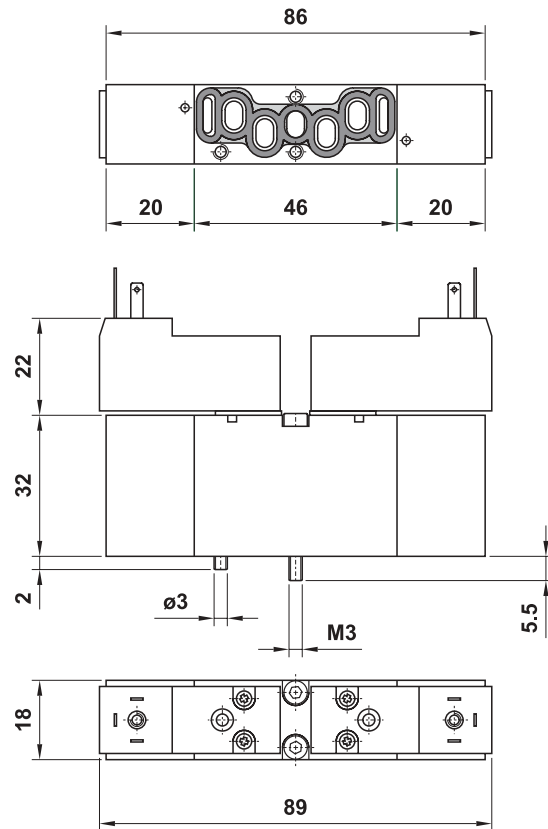
851 EE xx

5/2 doppio comando elettrico
5/2 double solenoid pilot



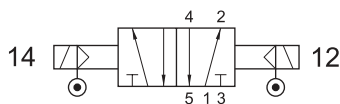
Nella sigla del prodotto sostituire le lettere "xx" con l'indicazione della tensione.
In the part number replace "xx" with the reference of the solenoid tension.

| | |
|--------------|----|
| 12V DC | 00 |
| 24V DC | 01 |
| 24V 50/60Hz | 02 |
| 110V 50/60Hz | 03 |
| 220V 50/60Hz | 04 |



851 EE AS xx

5/2 doppio comando elettrico alimentazione separata
5/2 double solenoid pilot with separate air supply



Nella sigla del prodotto sostituire le lettere "xx" con l'indicazione della tensione.
In the part number replace "xx" with the reference of the solenoid tension.

| | |
|--------------|----|
| 12V DC | 00 |
| 24V DC | 01 |
| 24V 50/60Hz | 02 |
| 110V 50/60Hz | 03 |
| 220V 50/60Hz | 04 |

